
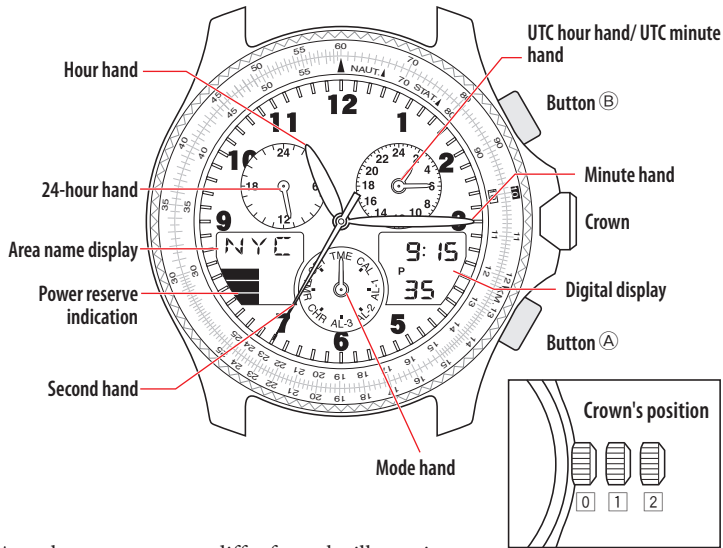


- This watch is solar-powered. Expose the dial to light and use it sufficiently charged.
- To see details of charging time, specifications and operations, refer to the instruction manual:  C650/C651/C652 instruction manual

## Component identification



- Actual appearance may differ from the illustration.
- The crown has two positions when pulling it out.
- Refer also to our web page for detail of usage of the scale and bezel on the watch. (<http://www.citizenwatch-global.com/support/pdf/enhanced/e.pdf>)

## Checking the power reserve

- The power reserve indication indicates the current power reserve.
- Indication example: C650/C651.

Level	3	2	1	0
Power reserve level scale				
Meaning	Power reserve is sufficient.	Power reserve is OK.	Power reserve is getting low.	Insufficient charge warning has started.
			<b>Charge immediately.</b>	

## Time setting warning function (only for C650)

- Hands and the digital display warn the user as below to set the time correctly when the watch is charged again after it stopped because of insufficient charge.
- Hands except mode hand: move to reference positions
  - Area name display / digital display: blink
- Adjust the time and calendar.

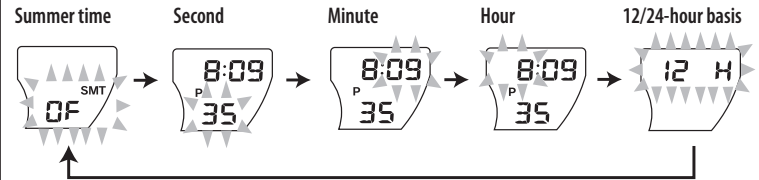
## Setting the time of the digital section

- To set the time of the analog section, refer to "Switching the time of analog and digital sections".

1. Push the crown in to position **0**.
2. Rotate the crown to move the mode hand to point [TME].
3. Press and release the lower right button **A** or upper right button **B** repeatedly to indicate an area name you want on the area name display.
  - For area names, refer to the table on "Using the world time".
4. Pull the crown out to position **2**.  
The second hand points 0 second and the summer time setting starts blinking.

## 5. Press and release the upper right button **B** repeatedly to change the target to be set.

- Each time you press button **B**, the target changes as follows:



- The summer time setting does not appear when selecting "UTC".

## 6. Adjust the target selected.

- Second: press button **A** in accordance with a reliable time source
- Minute/hour: rotate the crown. When you rotate the crown quickly, the indication will change continuously. To stop the rapid change, rotate the crown.
- 12/24-hour basis: press button **A**. Each time you press the button, the setting changes alternately between 12H and 24H. "A" (AM) or "P" (PM) is indicated when selecting 12-hour basis.

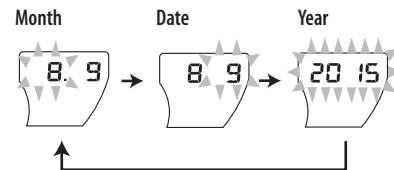
## 7. Repeat steps 5 and 6 to set other targets.

## 8. Push the crown in to position **0** to finish the procedure.

## Setting the calendar

The calendar of this watch does not have to be adjusted manually until December 31, 2099 including leap years. (perpetual calendar)

1. Push the crown in to position **0**.
2. Rotate the crown to move the mode hand to point [CAL].
3. Press and release the lower right button **A** or upper right button **B** repeatedly to indicate an area name you want on the area name display.
  - For area names, refer to the table on "Using the world time".
4. Pull the crown out to position **2**.  
"Month" blinks on the digital display.
5. Press and release the upper right button **B** repeatedly to change the target to be set.
  - Each time you press button **B**, the target changes as follows:



## 6. Rotate the crown to set the calendar.

- When you rotate the crown quickly, the indication will change continuously. To stop the rapid change, rotate the crown.

## 7. Repeat steps 5 and 6 to set other targets.

## 8. Push the crown in to position **0** to finish the procedure.

- The day of week is set automatically.

## Using the world time

1. Push the crown in to position **0**.
2. Rotate the crown to move the mode hand to point [TME] or [CAL].
  - When [CAL] is selected, the calendar is displayed.
3. Press and release the lower right button **(A)** or upper right button **(B)** to select an area.

The selected area and its time or calendar are indicated on the digital display and the area name display.

### Table of time zones and representative areas

Area name	Representative area	Time zone	Area name	Representative area	Time zone
UTC	Coordinated Universal Time	±0	TYO	Tokyo	+9
LON	London		SYD	Sydney	+10
PAR	Paris		NOU	Noumea	+11
ROM	Rome	+1	AKL	Auckland	+12
CAI	Cairo		HNL	Honolulu	-10
IST	Istanbul		ANC	Anchorage	-9
MOW	Moscow	+2	LAX	Los Angeles	-8
KWI	Kuwait		DEN	Denver	-7
DXB	Dubai		MEX	Mexico City	-6
KHI	Karachi	CHI	Chicago		
DAC	Dhaka	+4	NYC	New York	-5
BKK	Bangkok		YUL	Montreal	
SIN	Singapore		CCS	Caracas	-4
HKG	Hong Kong	+8	RIO	Rio de Janeiro	-3
PEK	Beijing		BUE	Buenos Aires	

- The time zone in the table is based on UTC (Coordinated Universal Time).
- Countries or regions may change time zones for various reasons.

## Setting the summer time

- You can set the summer time for each area.
- You cannot set the summer time for "UTC".

1. Push the crown in to position **0**.
2. Rotate the crown to move the mode hand to point [TME].
3. Press and release the lower right button **(A)** or upper right button **(B)** repeatedly to indicate an area name you want to set the summer time to.
4. Pull the crown out to position **2**.  
The second hand points 0 second and the summer time setting starts blinking.
5. Press and release the lower right button **(A)**.  
• Each time you press button **(A)**, the summer time ON/OFF(OFF) changes alternately.
6. Push the crown in to position **0** to finish the procedure.

## Switching the time of analog and digital sections

The time of the analog section (hour/minute/24-hour hands) cannot be adjusted directly.

Set the time of the area you want to indicate in the analog section once in the digital section and then switch the time between the analog and digital sections.

- The second hand and the second indication displayed on the digital display are always synchronized.

1. Push the crown in to position **0**.
2. Rotate the crown to move the mode hand to indicate [TME] or [CAL].

- When [CAL] is selected, the calendar is displayed.

3. Press and release the lower right button **(A)** or upper right button **(B)** to select an area.

The time or calendar of the selected area is indicated on the digital display and the area name display.

4. Press and release both the upper right button **(A)** and lower right button **(B)** at the same time.

The time of the digital and analog (hour/minute/24-hour hands) sections switches.

## Registering an area of a time zone you like

You can register one new area of a time zone on the world time of this watch.

- Check the time zone (based on the UTC) of the area you want to register beforehand.
- The time zone can be set in 1 hour units.

1. Push the crown in to position **0**.
2. Rotate the crown to move the mode hand to point [SET].

3. Pull the crown out to position **2**.

The area name and the time zone of the area previously set are displayed on the area name display and the digital display.

- "---" is indicated when they have not been set.



4. Press and release the upper right button **(B)** repeatedly to change the target to be changed.

- The target that is blinking is adjustable.

5. Rotate the crown to set the target.

- Input alphabets and numbers to indicate the new area name. Following letters, numbers and symbols can be used.

Alphabet: A to Z

Numbers: 0 to 9

Symbols: "--" (hyphens) and "␣" (blank spaces)

- The time zone can be set from "-11" to "+12".
- When you rotate the crown quickly, the indication will change continuously. To stop the rapid change, rotate the crown.

6. Repeat steps 4 and 5 to set the area name and the time zone.

7. Push the crown in to position **0**.

8. Rotate the crown to move the mode hand to point [TME].

9. Press and release the lower right button **(A)** or upper right button **(B)** repeatedly to select the area newly registered.

### Deleting the registered area

Set the area name to "---".

## Controlling selectable areas

You can control selectable areas which is displayed when using world time, calendar, alarm, etc. Areas unnecessary for you can be hidden.

1. Push the crown in to position **0**.
2. Rotate the crown to move the mode hand to point [SET].
3. Pull the crown out to position **1**.  
The digital display blinks.
4. Rotate the crown to select an area.
5. Press and release the upper right button **B** to change the setting of the area.
  - Each time you press button **B**, the setting changes alternately.



SET: The area is displayed.

OFF: The area is hidden.

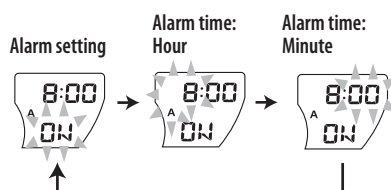
- Each time you press button **A** in this step, the summer time setting changes alternately.
6. Repeat steps 4 and 5 to select and set other areas.
  7. Push the crown in to position **0**.
  8. Rotate the crown to move the mode hand to indicate [TME] to finish the procedure.

## Using the alarm

The alarm sounds for about 15 seconds at the time of the area you set.

- Alarm can be set separately at [AL-1], [AL-2], and [AL-3].

1. Push the crown in to position **0**.
2. Rotate the crown to move the mode hand to point [AL-1], [AL-2], or [AL-3].  
The area, alarm time and the alarm setting currently set are indicated.
3. Press and release the lower right button **A** or upper right button **B** repeatedly to select an area.
4. Pull the crown out to position **2**.  
The alarm setting turns to "ON" and it blinks.
5. Press and release the upper right button **B** repeatedly to change the target to be set.
  - Each time you press button **B**, the target changes as follows:



6. Set the target selected.
  - Alarm setting: press button **A**. Each time you press the button, the setting changes alternately between "ON" and "OF" (OFF).
  - Hour/minute of the alarm time: rotate the crown.  
When you rotate the crown quickly, the indication will change continuously. To stop the rapid change, rotate the crown.
7. Repeat steps 5 and 6 to set other targets.

8. Push the crown in to position **0**.
9. Rotate the crown to move the mode hand to point [TME] to finish the procedure.

### To stop alarm

Press any of the buttons.

### Turning the alarm on/off

1. Push the crown in to position **0**.
2. Rotate the crown to move the mode hand to point [AL-1], [AL-2], or [AL-3].
3. Pull the crown out to position **1**.
4. Press and release the lower right button **A**.
  - Each time you press button **A**, on/off of the setting changes alternately.
5. Push the crown in to position **0**.
6. Rotate the crown to move the mode hand to point [TME] to finish the procedure.

### Checking the alarm

Pressing and holding the button **A** and **B** while the mode is [AL-1], [AL-2] or [AL-3]. The alarm tone can be monitored.

## Using the chronograph

Measuring up to 24 hours in 1/100 second increments.

- Measurement continues even after changing the mode.

1. Push the crown in to position **0**.
2. Rotate the crown to move the mode hand to point [CHR].  
The chronograph is ready on the digital section.
3. Use the chronograph.

**Start/stop:** press button **B**.

- Pressing button **A** during measurement indicates the split time for 10 seconds and "SPL" blinks on the digital display.

**Reset:** press button **A** while the chronograph is stopped.

Be sure to reset chronograph and change the mode to [TME] or [CAL] after finishing measurement.

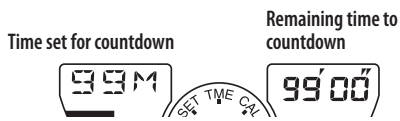


## Using the timer

You can set the countdown timer up to 99 minutes by 1-minute increments.  
 • Measurement continues even after changing the mode.

### Setting the time to countdown

1. Push the crown in to position **0**.
2. Rotate the crown to move the mode hand to point [TMR].  
The timer is ready on the digital section.



3. Pull the crown out to position **2**.  
The timer is reset and the time set for countdown blinks.
4. Rotate the crown to set the time to countdown.  
 • When you rotate the crown quickly, the indication will change continuously. To stop the rapid change, rotate the crown.
5. Push the crown in to position **0**.

### Using the timer

1. Push the crown in to position **0**.
2. Rotate the crown to move the mode hand to point [TMR].  
The timer is ready on the digital section.

**Start/stop:** press button **B**.

Pressing button **A** during countdown starts countdown again from the time set.

**Reset:** press button **A** while the countdown is stopped.

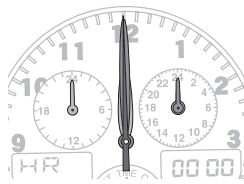
Be sure to reset the timer and change the mode to [TME] or [CAL] after finishing countdown.

### When the countdown is finished

The time-up tone sounds for 5 seconds.  
Press any of the buttons to stop the sound.

## Checking the reference position

1. Push the crown in to position **0**.
2. Rotate the crown to move the mode hand to point [CHR].
3. Pull the crown out to position **2**.  
 “HR” is displayed on the area name display and all hands except the mode hand move to the current reference positions.  
**Correct reference positions of all hands:** 12 o'clock position  
 • When the current reference position is different from the correct one, adjust the position following the steps of “Correcting the reference position”.
4. Push the crown in to position **0**.
5. Rotate the crown to move the mode hand to point [TME] to finish the procedure.



## Correcting the reference position

1. Push the crown in to position **0**.
2. Rotate the crown to move the mode hand to point [CHR].
3. Pull the crown out to position **2**.
4. Press and release the upper right button **B** repeatedly to change the hand to be corrected.  
 • Each time you press button **B**, the target changes as follows and is indicated on the area name display:  
 “HR” (hour/24-hour hands) → “MIN” (minute/UTC hour/UTC minute hands)  
 → “SEC” (second hand) → (back to the top)
5. Rotate the crown to adjust the target.  
 • When you rotate the crown quickly, the indication will move continuously. To stop the rapid movement, rotate the crown.  
 • Hands except the second hand can be rotated to the both directions, however, rotate them clockwise just before finishing the setting.
6. Repeat steps 4 and 5 to set other hands.
7. Push the crown in to position **0**.
8. Rotate the crown to move the mode hand to indicate [TME] to finish the procedure.

## Resetting the watch - All Reset

- Check the power reserve if it is in the level 3 or 2 before executing All Reset.
1. Push the crown in to position **0**.
  2. Rotate the crown to move the mode hand to indicate [CHR].
  3. Pull the crown out to position **2**.  
 “HR” is displayed on the area name display and all hands except the mode hand move to the current reference positions.  
 • After confirming that all the hands stop, proceed to the next step.
  4. Press and release both the upper right button **A** and lower right button **B** at the same time.  
 All the digital indication lights up as the buttons are released.
  5. Push the crown in to position **0** to finish the procedure.  
 A confirmation alarm sounds.

### After All Reset

After All Reset, adjust the reference position and set the time and calendar. Set also the alarm.