

Y150 Abbreviated instruction

ENGLISH

Component identification



The actual appearance of the watch may differ from the photographic images/illustrations on this instruction manual.

Winding the mainspring

This is an automatic winding mechanical watch, using a mainspring as power source. When wearing the watch, your hand's movement rotates the oscillating weight to wind the mainspring automatically.

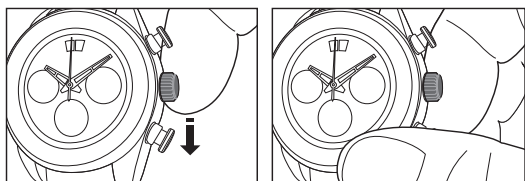
- When your hand's movement is small and/or a few, winding may become insufficient.
- Once the mainspring is wound fully, the watch will run for about 42 hours.

For optimal performance, wind the mainspring frequently.

- In order to be able to use this watch for a long period of time, rotate the crown slowly so that you do not damage the watch.

Winding the mainspring manually

- 1 Push the crown in to position 0.
- 2 Rotate the crown to wind the mainspring.



- Turn the crown by rubbing it down from the back side of the watch.
- When the watch stops, turning the crown about 30 to 40 times will wind the mainspring fully.
- Turning the crown after the mainspring's full winding does not damage the mainspring.

Adjusting the time

When the watch stops, wind the mainspring manually before setting.

- 1 Pull the crown out to position 2 as the second hand points 0 second.
The second hand stops.
- 2 Rotate the crown to adjust the time.
The hour/minute hands and the date indicator move together.
 - Be sure to set AM/PM correctly.
 - The date indicator does not move together when moving hands counterclockwise.
- 3 Push the crown in to position 0 following a certain time signal.

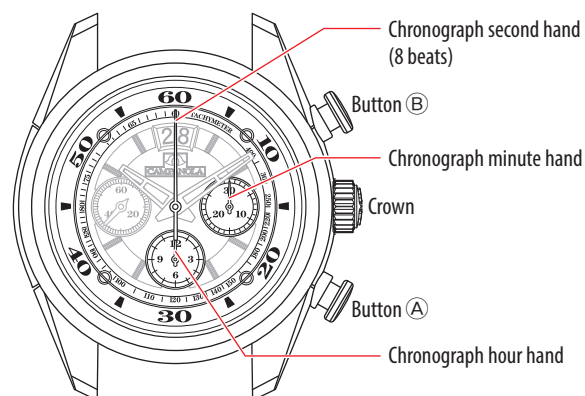
Adjusting the date (quick date indicator adjustment)

Adjust the date indicator on the first days of March, May, July, October and December.

- Because the watch changes the date indicator, do not execute the quick date indicator adjustment in the following time on the watch:
Between 10:00 PM to 2:00 AM

- 1 Pull the crown out to position 1.
- 2 Rotate the crown clockwise to adjust the date.
- 3 Push the crown in to position 0 to finish this procedure.

Using the chronograph



This is a 12-hour chronograph.

- Pressing button (B) starts/stops/restarts measurement.
- To reset the chronograph, press button (A) while measurement stops.