

Installation Guide for Windows VISTA

How to install the driver software

In order to perform the data transfer between your personal computer and HYPER AQUALAND with USB cable, install the USB software driver into your personal computer in advance.

Install the USB driver software by following the procedure described below.

Download the driver file to a folder (Ex. C:¥temp¥WINXP) on your hard drive from the following Web site, and double click the downloaded file. The driver file will be extracted.

[Click here to download.](#)

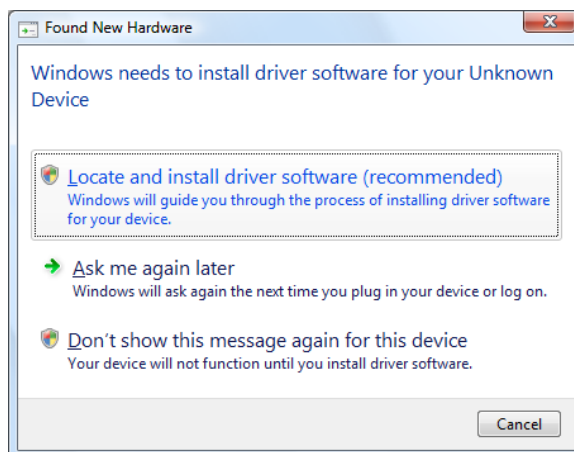
*1MB free space is required to download the driver file and to update the driver.

(1) Confirm that your personal computer has properly started up.

* Be sure you are logged into Windows with Administrator authority.

(2) Close all programs that are currently active.

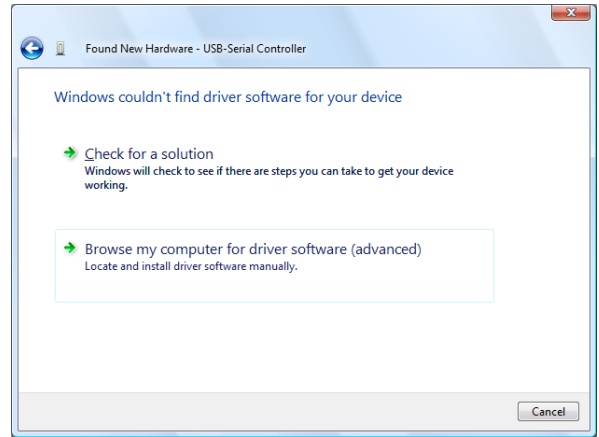
(3) Plug in the USB cable for HYPER AQUALAND to an available USB port on your personal computer. When the USB cable is properly plugged in, Windows will show that a new hardware has been found. Then, click "Locate and install driver software (recommended)".



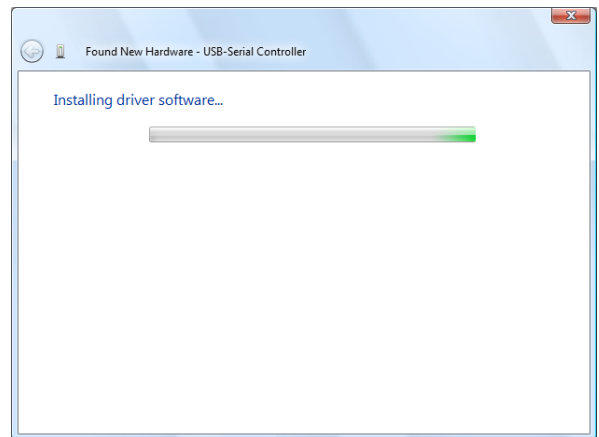
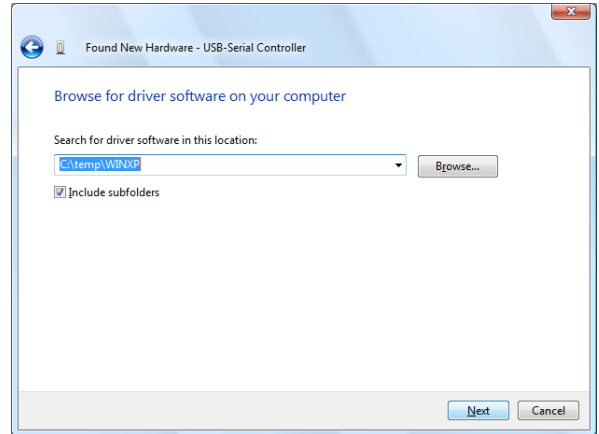
(4) Click "I don't have the disc. Show me other options"



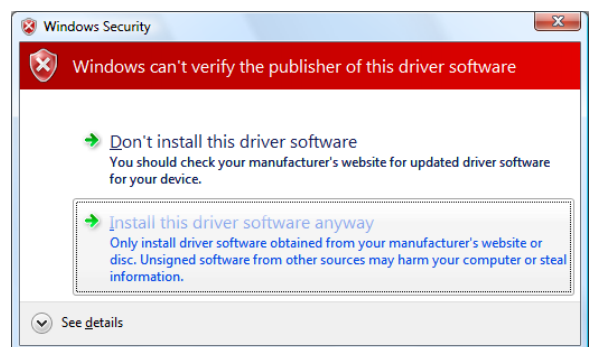
(5) Click “Browse my computer for driver software (advanced)”



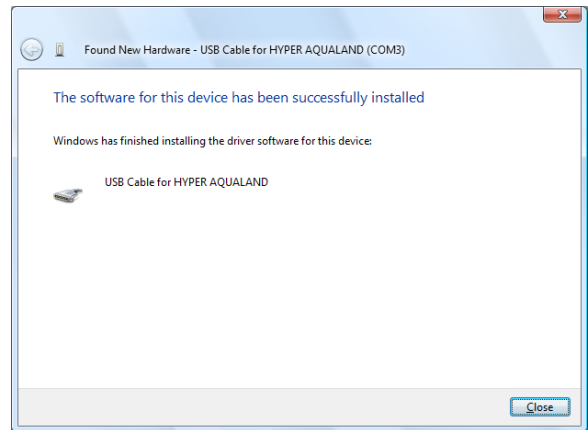
(6) Click “Browse” and specify the folder where you extract the driver file. Then, click “Next”. The installation of the software driver will start.



(7) If “Windows Security” is displayed, click “Install this driver software anyway”.



(8) When the installation is completed, Windows will show “The software for this device has been successfully installed”. Then, click “Close”.



* Installation of the USB software driver is required only once before performing the data transfer by using the USB cable for the first time. It is no longer required to install the software driver prior to a subsequent data transfer. However, the installation of the software driver is required if you perform the data transfer between HYPER AQUALAND and any PC that the software driver has not been installed.

How to install "ComChecker"

NOTICE: Before proceeding, be sure to install the USB Cable for HYPER AQUALAND driver and AQUALAND GRAPH software (AQUALAND GRAPH 2V2.1). Starting and ending AQUALAND GRAPH 2V2.1 are required more than once prior to the installation of ComChecker. Install ComChecker from the CD-ROM provided by following the procedure described below.

- (1) After confirming that your computer has started up properly, end all applications that are currently active, including any anti-virus applications as these may inhibit proper installation of certain files.
 - * Be sure you are logged into Windows with Administrator authority before continuing.

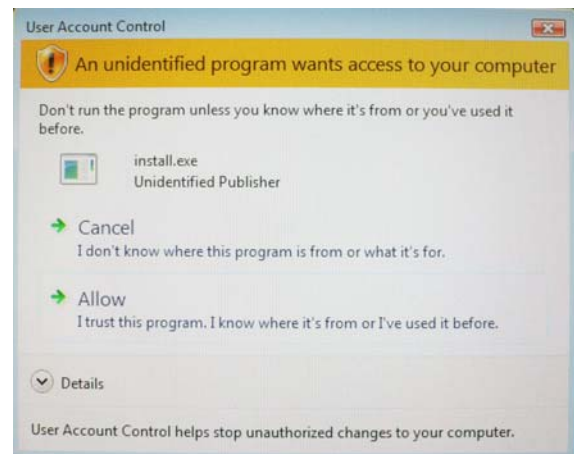
- (2) Plug in the USB Cable for HYPER AQUALAND to an available USB port on your personal computer.

- (3) Insert "USB Cable for HYPER AQUALAND CD-ROM" into your computer.

Double click "install.exe" in the [ComChecker] folder to start the installation.

- * When the User Account Control of your personal computer is active, Windows will show the message right appears.

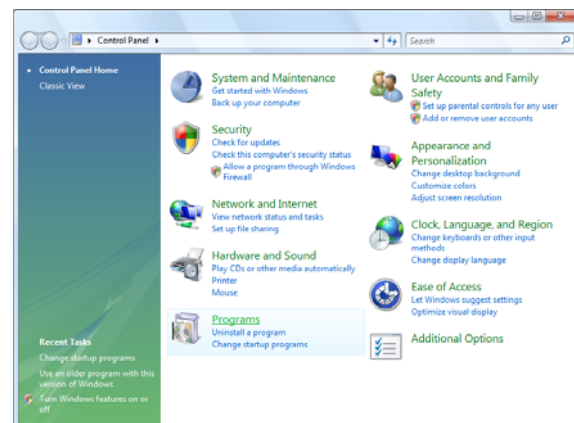
Click "Allow" to start the installation.



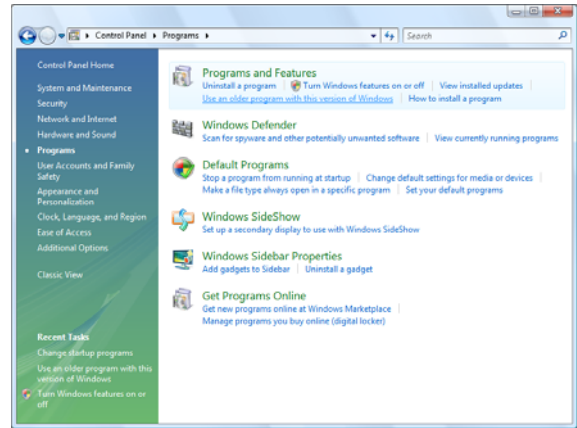
- * When ComChecker does not work correctly after restarting your personal computer, setup your personal computer by following the procedure described below.

- (4) Open "Control Panel".

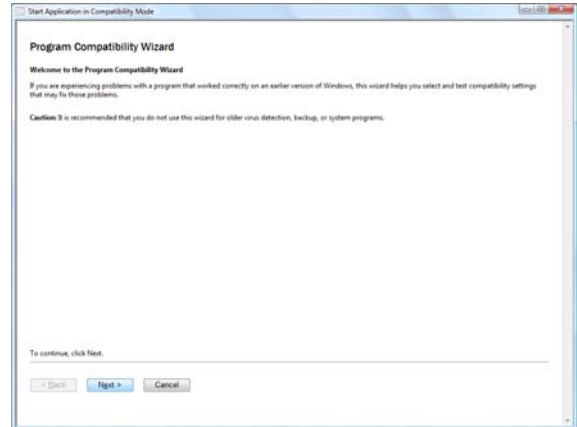
Then, click "Programs".



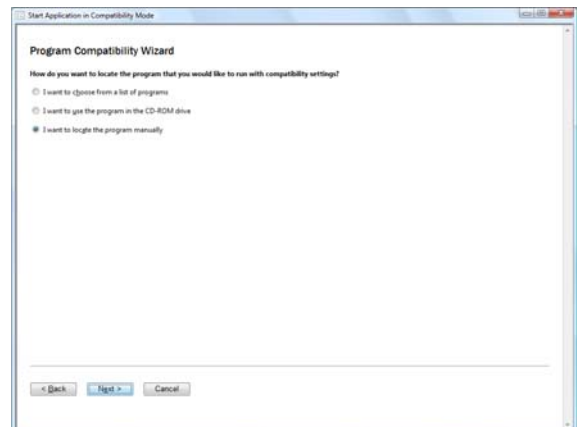
(5) Click “Use an older program with this version of Windows”.



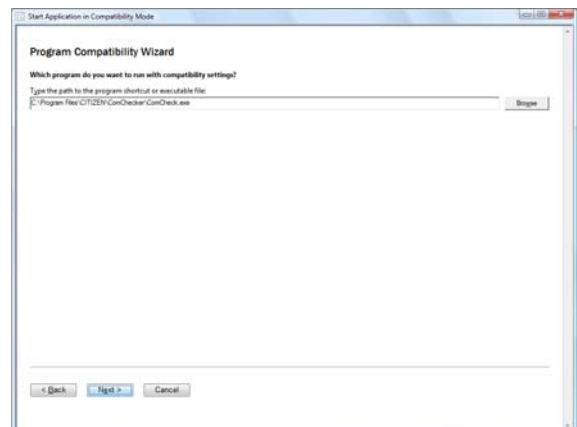
(6) When the “Welcome to the Program Compatibility Wizard” window appears, click “Next”.



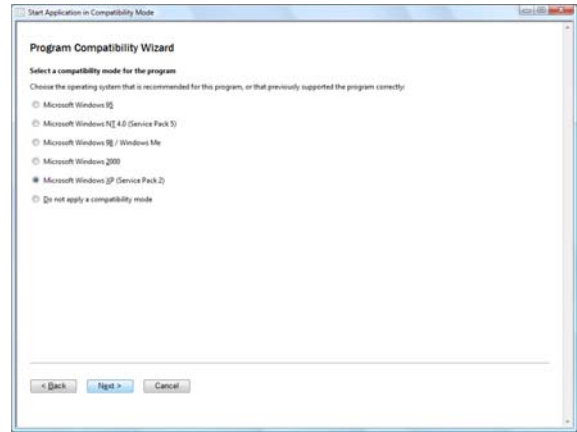
(7) Select “I want to locate the program manually”. Then, click “Next”.



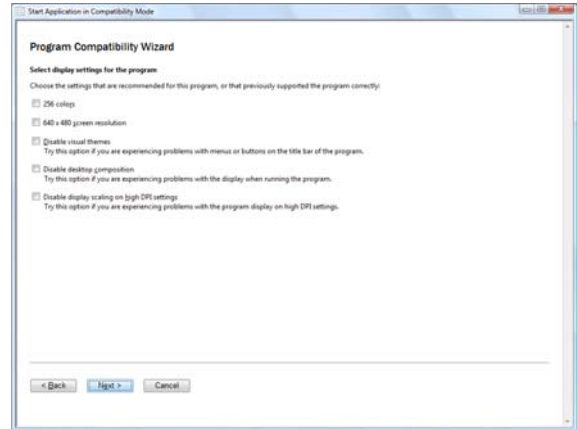
(8) Click “Browse” and specify [C:¥Program Files ¥CITIZEN¥Comchecker¥Comcheck.exe]. Then, click “Next”.



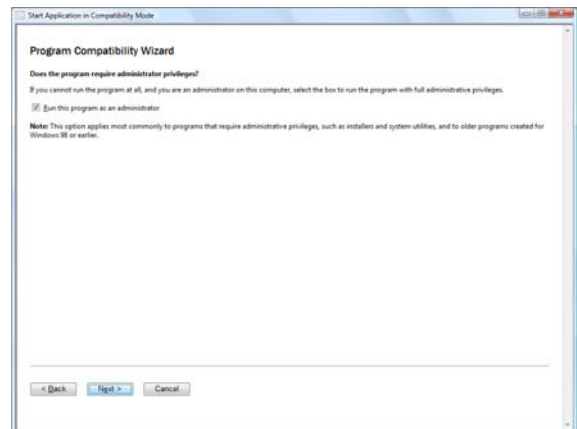
(9) Click “Browse” and specify [C:¥Program Files ¥CITIZEN¥Comchecker¥Comcheck.exe]. Then, click “Next”.



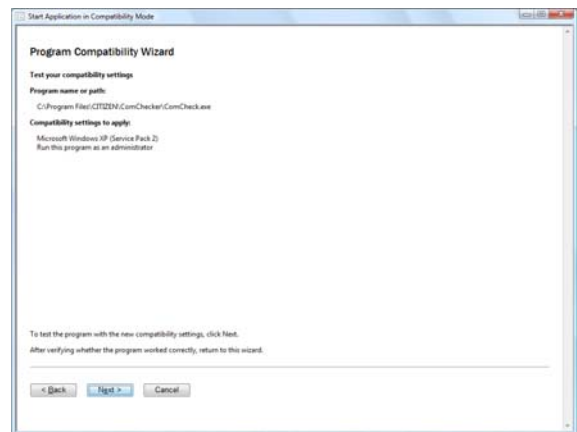
(10) Click “Next”.



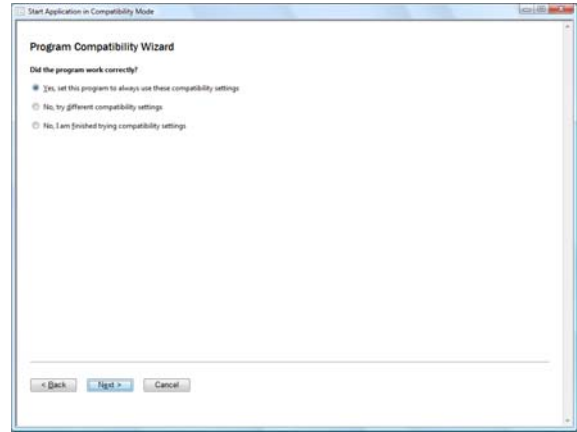
(11) Check “Run this program as an administrator”. Then, click “Next”.



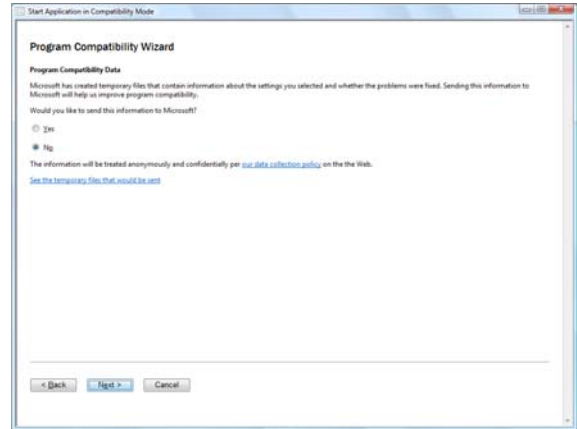
(12) Click “Next” to start testing of compatibility settings.



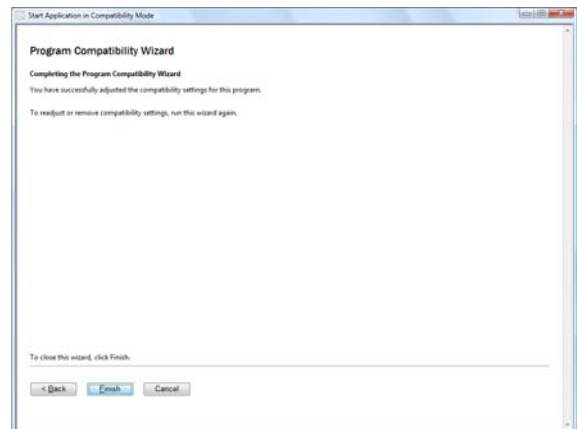
(13) Select “Yes, set this program to always use these compatibility settings”. Then, click “Next”.



(14) Select “No”. Then, click “Next”.

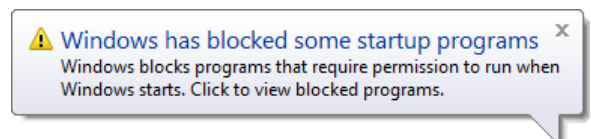


(15) Click “Finish”.



*As long as you do not change the location of USB port where you plug in HYPER AQUALAND USB cable, the installed software is available and works properly. If you change the location of USB port, ComChecker may be blocked by the security program of Windows and the software does not work properly. In that case, follow the below procedures to solve the problem.

(16) The right message icon will appear when ComChecker is blocked by the security program of Windows.



Right-click the task-tray icon and choose “ComChecker” in “Run blocked program”.

