

***CAPgm***

**INSTRUCTION MANUAL**



---

# Introduction

CAPgm software lets you edit set data of CYBER AQUALAND Nx, or CYBER AQUALAND with a personal computer. In addition to making the various settings of the watch (travel location, alarm, timer, destination timer and so forth), you can also have the watch display different graphics on different days as well as set anniversaries and other special commemorative days.

- The copyrights for this instruction manual and software are retained by the manufacturer.
  - Unauthorized reproduction of any or all of this instruction manual or software is strictly prohibited.
  - This instruction manual and software are subject to change without notice.
- 
- ☆ Windows, Windows 98, Windows 98 SE, Windows Me, Windows 2000 and Windows XP are the registered trademarks or trademarks of the Microsoft Corporation in the US and other countries.
  - ☆ Other corporate names and product names contained herein are also the trademarks or registered trademarks of their respective corporations.

# CAPgm

## CONTENTS

Introduction .....	2
1. Start up and Ending .....	4
1.1. Startup Window.....	4
2. Main Window.....	5
2.1. Transfer.....	6
2.2. Send.....	7
2.3. Set PC Clock.....	8
2.4. Interface .....	9
2.4.1. IrDA .....	9
2.4.2. USB .....	9
3. Edit Setting Data .....	10
3.1. Log Mode .....	10
3.2. General .....	11
3.2.1. Alarm .....	11
3.2.2. Hour Format .....	12
3.2.3. Timer .....	12
3.2.4. Alarm Sound.....	13
3.3. Select Travel Location .....	14
3.3.1. Select Main Location/Travel Location .....	15
3.3.2. Change Current Location Group .....	15
3.4. Edit Location and Time Difference.....	16
3.4.1. Add Location and Time Difference ..	16
3.4.2. Add Existing Location to Location List .....	17
3.4.3. Modify or Delete Location List .....	17
3.5. Edit Location Group .....	18
3.5.1. Add a Location Group .....	18
3.5.2. Duplicate Location Group.....	19
3.5.3. Change a Location Group .....	19
3.5.4. Register Location Group .....	19
3.5.5. Temporary Location Group Name... ..	19
3.5.6.Delete Location Group .....	19
3.5.7. Function Restrictions.....	20
3.6. Destination Timer.....	21
3.6.1. Arrival Day and Time.....	21
3.6.2. Select Destination .....	21
3.6.3. Select Alarm Sound.....	21
3.7. Anniversaries .....	22
3.7.1. Add Anniversary.....	22
3.7.2. Change Graphic .....	22
3.7.3. Delete Anniversary.....	23
3.8. Dive Mode.....	24
3.8.1. Depth Alarm .....	24
3.8.2. Dive Time Alarm.....	25
3.9. Set Daily Graphic.....	26
3.9.1. Add Graphic .....	27
3.9.2. Change Graphic .....	27
3.9.3. Delete Graphic .....	27
3.9.4. Change Display Order.....	27
4. Limiting Values.....	28
4.1. No.of Registrations .....	28
4.2. No.of Entered Characters .....	28
4.3. Other Limitations.....	28


---

# 1. Startup and Ending

## Startup

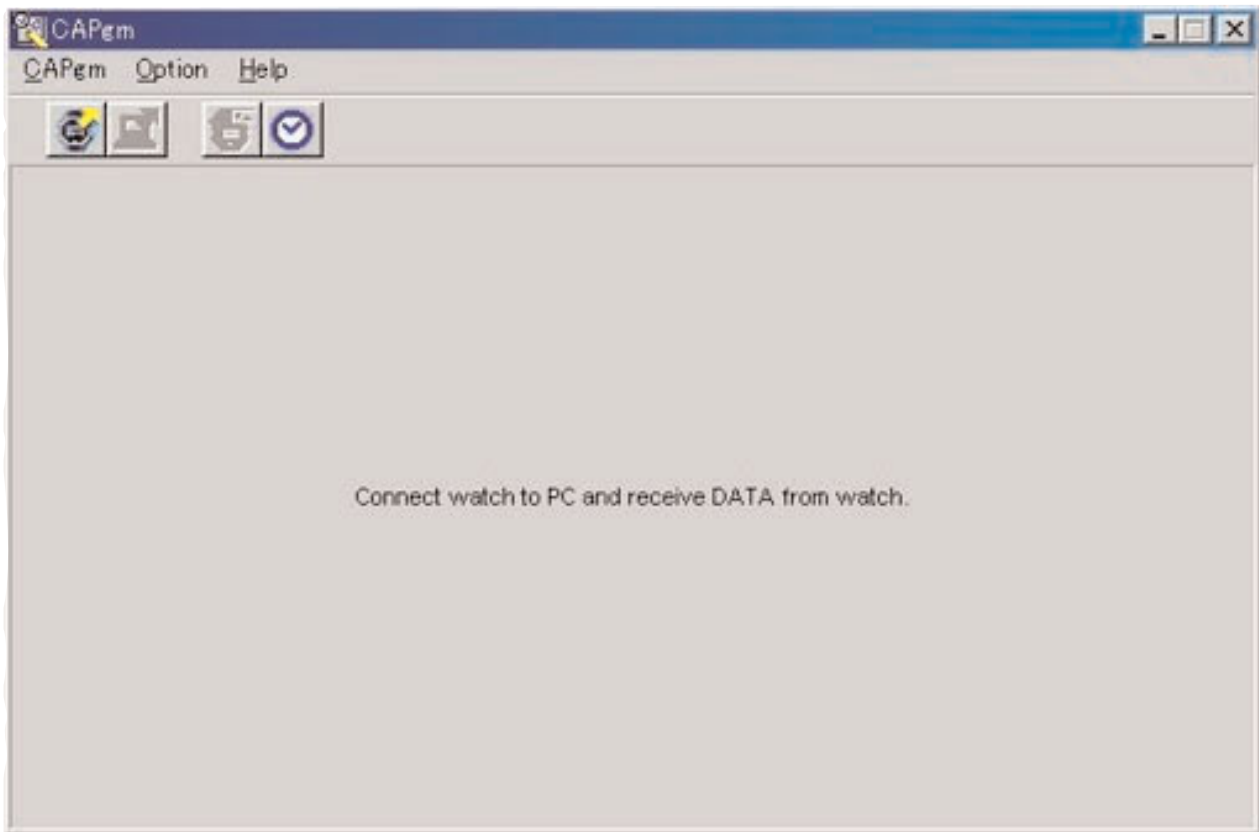
Select Program, [CITIZEN CAPgm] and then [CAPgm] from the START button in the task bar.  
The <Startup Window> is displayed.

## Ending

Either select [Exit (X)] of the [CAPgm (C)] menu in the <Startup Window> or <Main Window>, or click the  in the upper right corner of the window with the mouse to end [CAPgm].

---

## 1.1. Startup Window



This is the first window displayed when [CAPgm] is first started up. The <Startup Window> lets you use the functions indicated below.

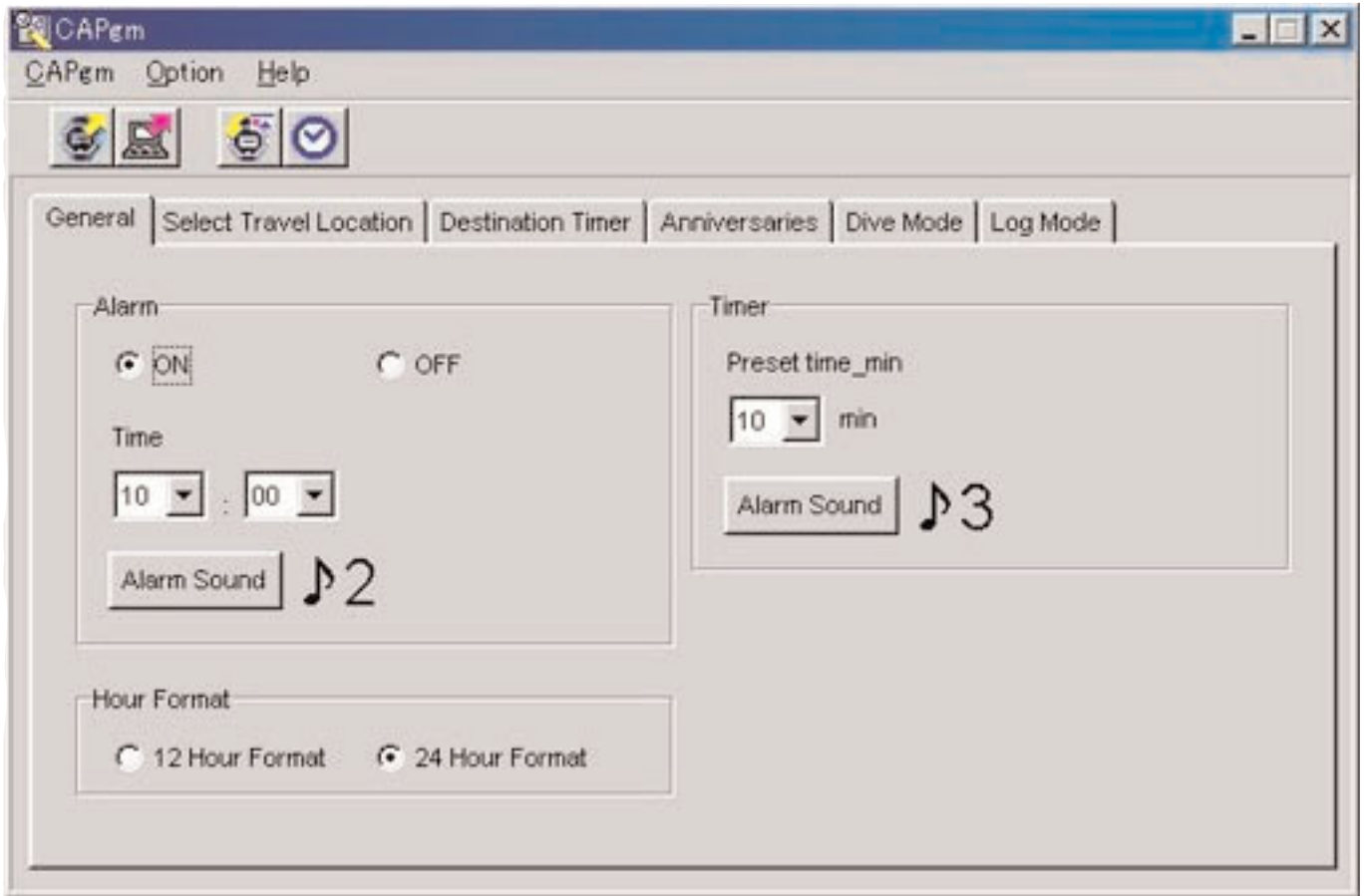
- Receiving setting data from watch
- Setting PC clock

When receiving setting data from the watch, the world time data registered in the watch is also received. It is necessary to register a name (location group) for managing this data with your PC.

Either select [Exit (X)] from the [CAPgm (C)] menu or click the  in the upper right corner of the window to end [CAPgm].

\* When editing watch setting data, first receive setting data from the watch. The <Main Window> is displayed if setting data is received successfully.

## 2. Main Window



You can use the functions indicated below in the <Main Window>.

- Receiving setting data from watch
- Sending setting data edited with PC to watch
- Setting PC clock
- Editing setting data of watch

Either select [Exit (X)] of the [CAPgm (C)] menu or click the  in the upper right corner of the window with the mouse to end [CAPgm].

### Edit Setting Data

You can set the watch setting data indicated below.


- General (Alarm, Hour format, Timer)
- Select travel location (select main location, select travel location, edit location, edit location group)
- Destination timer
- Anniversaries
- Dive mode (dive time alarm, depth alarm)
- Log mode
- Set daily graphic

---


## 2.1. Transfer


Setting data is received from the watch.

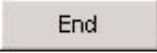

The <Receive setting data from watch> dialogue box is displayed when either [Transfer (I)] is selected from the [CAPgm (C)]

menu in the <Startup Window> or <Main Window> or  in the tool bar is clicked with the mouse.



Data reception begins when the  button is clicked with the mouse. If reception is successful, the program returns to the <Main Window> .

When the  button is clicked, you can change the interface used to received data.

The dialogue box is closed either by clicking the  button or the  in the upper right corner of the dialogue box with the mouse.

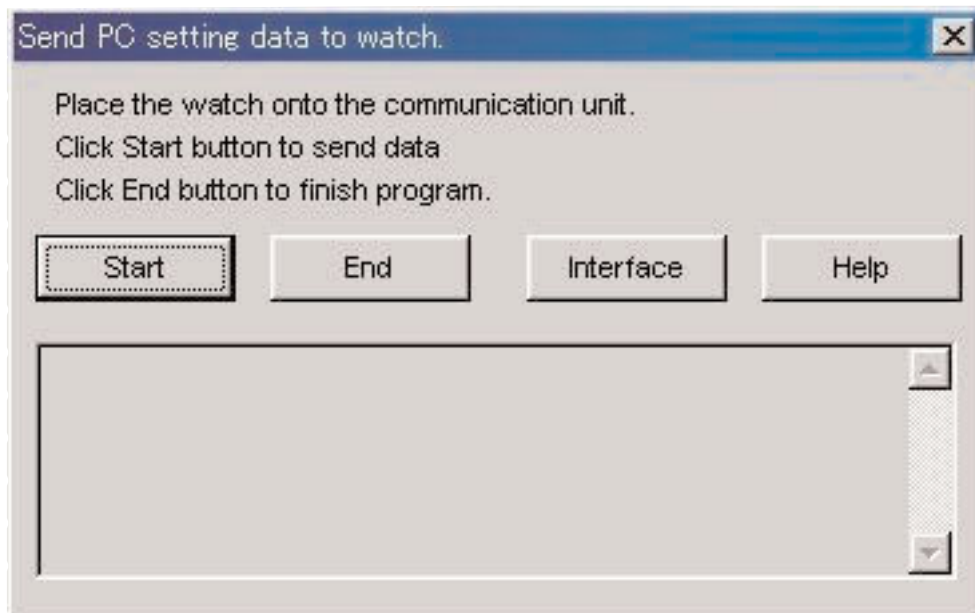
---

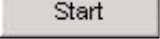
## 2.2. Send


This is used to send setting data edited with your PC to the watch.

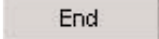

The <Send PC setting data to watch> dialogue box is displayed when [Send (S)] is selected from the [CAPgm (C)] menu in

the <Startup Window> or <Main Window> or  is clicked with the mouse in the tool bar.



Data transmission begins when the  button is clicked with the mouse. If transmission is successful, the program returns to the <Main Window>.


When the  button is clicked, you can change the interface used to send data.

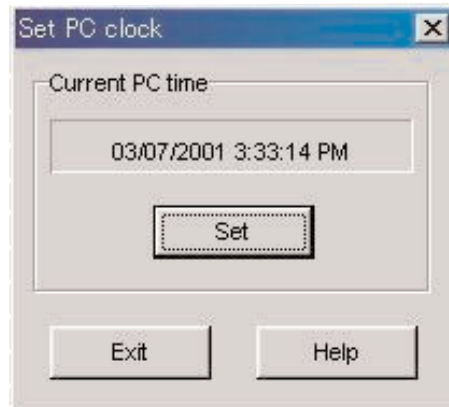
The dialogue box is closed either by clicking the  button or the  in the upper right corner of the dialogue box with the mouse.

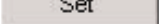
---

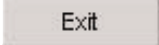

## 2.3. Set PC Clock

The PC clock is set to the time of the watch.

The <Set PC Clock> dialogue box is displayed when [Set PC Clock (C)] is selected from the [Option (O)] menu in the <Startup Window> or <Main Window> or when  in the tool bar is clicked with the mouse.

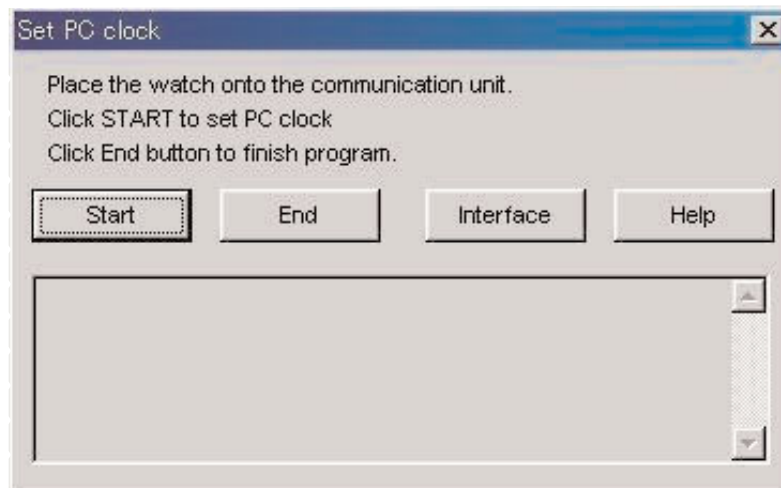


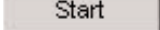
The <Set PC Clock> dialogue box is displayed when the  button is clicked with the mouse. If the time is received successfully, the displayed current time is changed to the same time as the watch. The time of the PC clock may be about 30 seconds behind the watch time since a delay occurs in communications with the watch.


The dialogue box is closed either by clicking the  button or the  in the upper right corner of the dialogue box with the mouse.

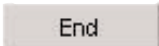

---

## Receive Time



Time reception begins when the  button is clicked with the mouse. If reception is successful, the program returns to the <Set PC Clock> dialogue box.

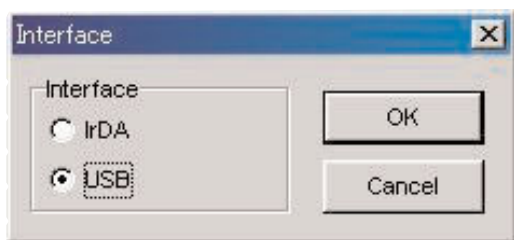
When the  button is clicked, you can change the interface used to received the time.

The dialogue box is closed either by clicking the  button or the  in the upper right corner of the dialogue box with the mouse.



## 2.4. Interface

This is for selecting the interface to be used when connecting with the watch.



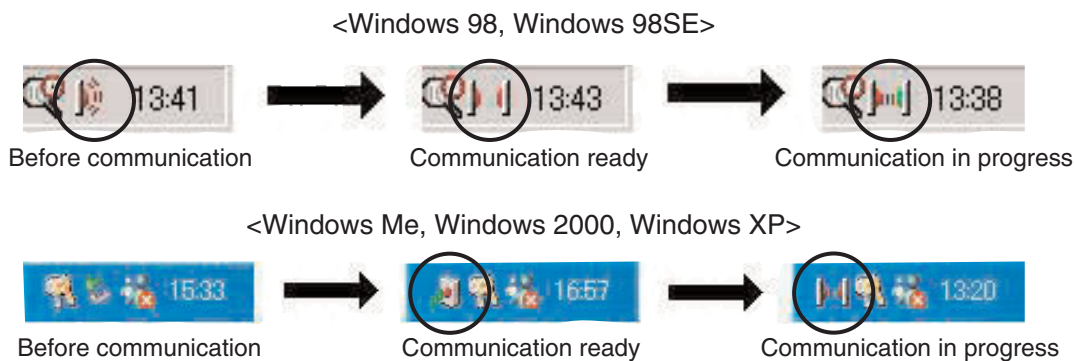
The interface set with [AQUALAND GRAPH Nx] is used for communicating with the watch.


Although the interface can be temporarily changed here, the setting is not saved.

### 2.4.1 IrDA

Data is transferred from [CYBER AQUALAND Nx (or CYBER AQUALAND)] by IrDA.

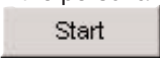
- The display changes to the Infrared Communication Menu when the [MODE] button near the lower left corner of the Time Display of [CYBER AQUALAND Nx (or CYBER AQUALAND)] is pressed for at least 2 seconds.
- When "to PC" is selected with the upper left [SEL] button and the upper right [SET] button is pressed, the watch is ready to be connected with a personal computer.
- When in contact with the infrared communication unit in this state, [CYBER AQUALAND Nx (or CYBER AQUALAND)] is able to communicate with the personal computer. At this moment, the infrared communication icon in the task tray of the personal computer changes from "Before Communication" to "Communication ready" as shown below.



- In the "Communication ready" state, clicking the  button using the mouse initiates communication between [CYBER AQUALAND Nx (or CYBER AQUALAND)] and the personal computer.
- Even if the [CYBER AQUALAND Nx (or CYBER AQUALAND)] is in contact with the personal computer's infrared communication unit, when the icon in the task tray does not change to the "Communication ready" state, it means the infrared communication function has not been set.
- Since the infrared communication function of [CYBER AQUALAND Nx (or CYBER AQUALAND)] is automatically canceled after one minute elapses, set this function immediately before the start of communication.

### 2.4.2 USB

Data is transferred from [CYBER AQUALAND Nx (or CYBER AQUALAND)] by USB.

- The communication unit (CMUT-02) and personal computer are connected with the USB cable provided, and [CYBER AQUALAND Nx (or CYBER AQUALAND)] is connected to the communication unit (CMUT-02).
- [CYBER AQUALAND Nx (or CYBER AQUALAND)] automatically displays the USB communication menu, after which it is able to communicate with the personal computer.
- At this point, when the  button is clicked with the mouse, data communication begins between [CYBER AQUALAND Nx (or CYBER AQUALAND)] and the personal computer. Once transfer is completed, a dialogue box is displayed informing the user of completion.
- If [CYBER AQUALAND Nx (or CYBER AQUALAND)] does not display the USB communication menu, after temporarily removing [CYBER AQUALAND Nx (or CYBER AQUALAND)], disconnect the USB cable of the communication unit (CMUT-02), and repeat the procedure from the beginning.

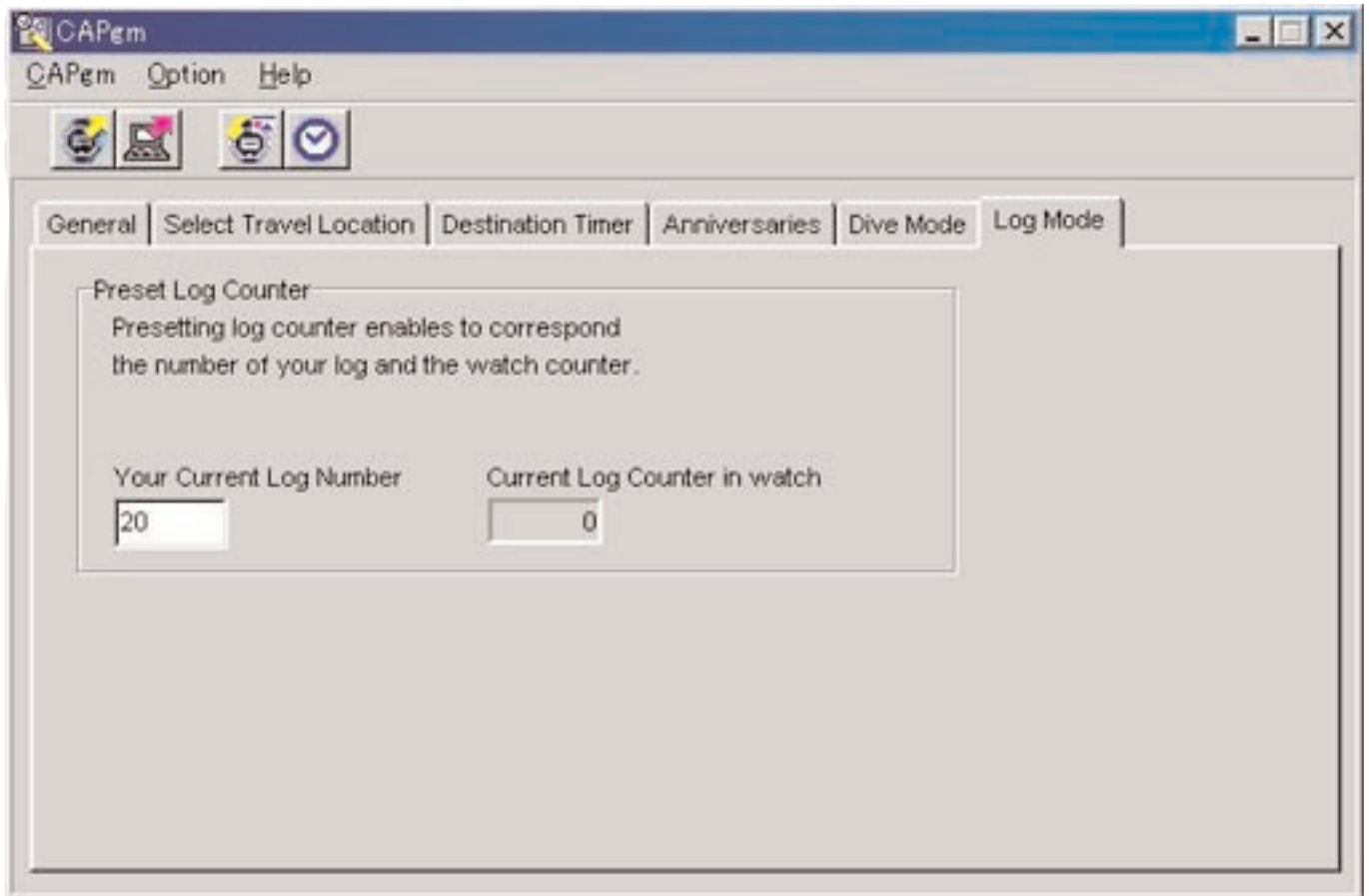
## 3. Edit Setting Data

### 3.1. Log Mode

The [Log Mode] tab on the <Main Window> is displayed when it is clicked with the mouse.

This lets you set the number of logs in the watch. The log number can be set from 0 to 65535.

After performing the all-reset procedure, the <Current Log Counter in Watch> is reset. When you want to continue to count the number of logs from the previous number of logs in the watch, set the previous number of logs as the value for <Your Current Log Number>.

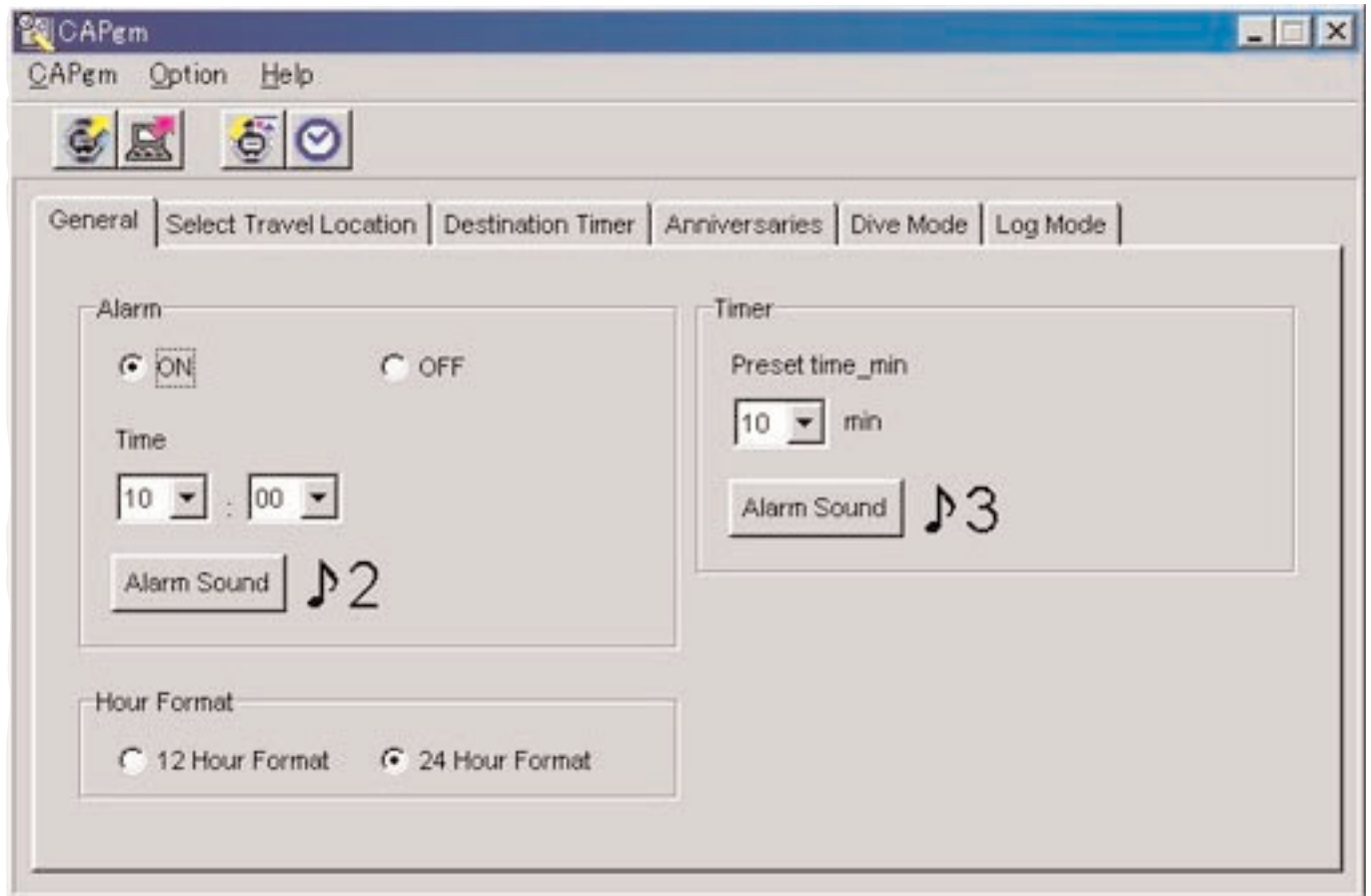


## 3.2. General

The [General] tab is displayed when it is clicked with the mouse on the <Main Window>.

The following settings are made with this tab.

- Alarm
- Hour Format
- Timer



### 3.2.1. Alarm

#### ON/OFF

Select ON when you want the alarm to sound.

Select OFF when you do not want the alarm to sound.

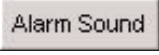
#### Time

Specify the time at which the alarm is to sound.

Specify the hour with the left combination box and the minutes with the right combination box.

The time is displayed in a 24 hour format.

#### Alarm Sound

You can select the alarm sound by clicking on the  button with the mouse.

### 3.2.2. Hour Format

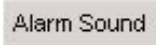
Select [12 Hour Format] when you want to display the watch current time using a 12 hour format.  
Select [24 Hour Format] when you want to display the watch current time using a 24 hour format.

### 3.2.3. Timer

#### Preset time-min

Specify the time at which the timer is to be set.  
Times from 1 to 99 minutes can be set.

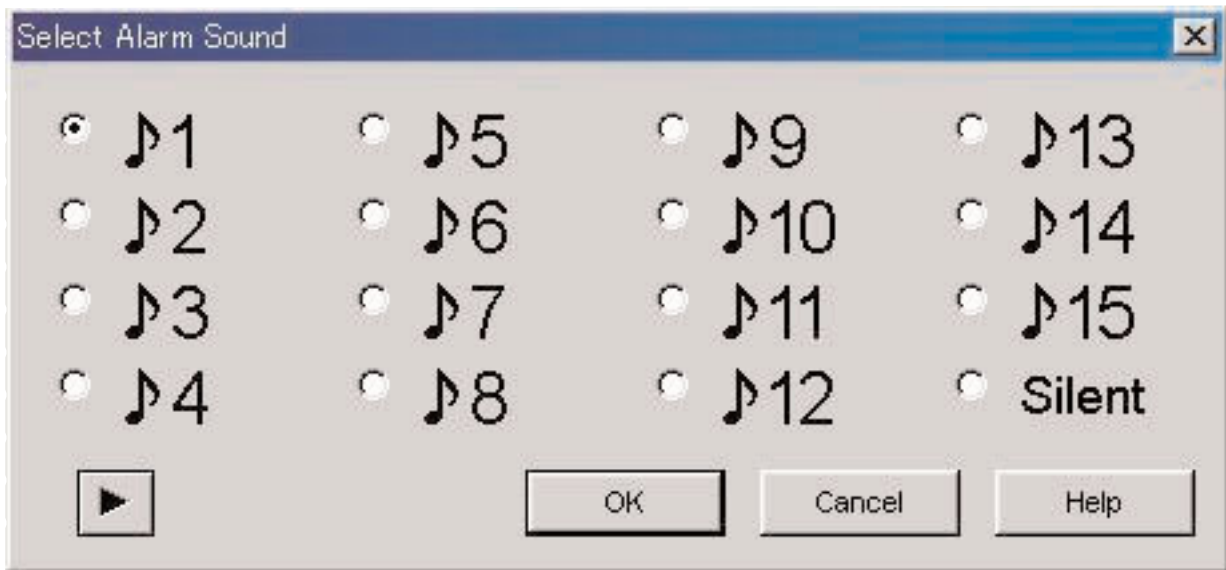
#### Alarm Sound


You can select the alarm sound by clicking on the  button with the mouse.


### 3.2.4. Alarm Sound



You can select the alarm sound you prefer from the 16 types of alarm sounds available.

You can listen to any of the alarm sounds before you make your choice provided your PC is able to play back "wav" files.



You can listen to an alarm sound by selecting an alarm sound and clicking on the  button with the mouse. It should be noted that the alarm sounds played back with your PC may not be completely identical to the alarm sounds heard when actually using [CYBER AQUALAND Nx (or CYBER AQUALAND)]. Use the alarm tone check function provided with [CYBER AQUALAND Nx (or CYBER AQUALAND)] to confirm actual alarm sounds.

When the  button is clicked with the mouse to end alarm sound selection, the selected alarm sound is applied and the dialogue box is closed.

Selection is canceled by either clicking the  button or clicking the  in the upper right corner of the dialogue box with the mouse, after which the dialogue box closes.

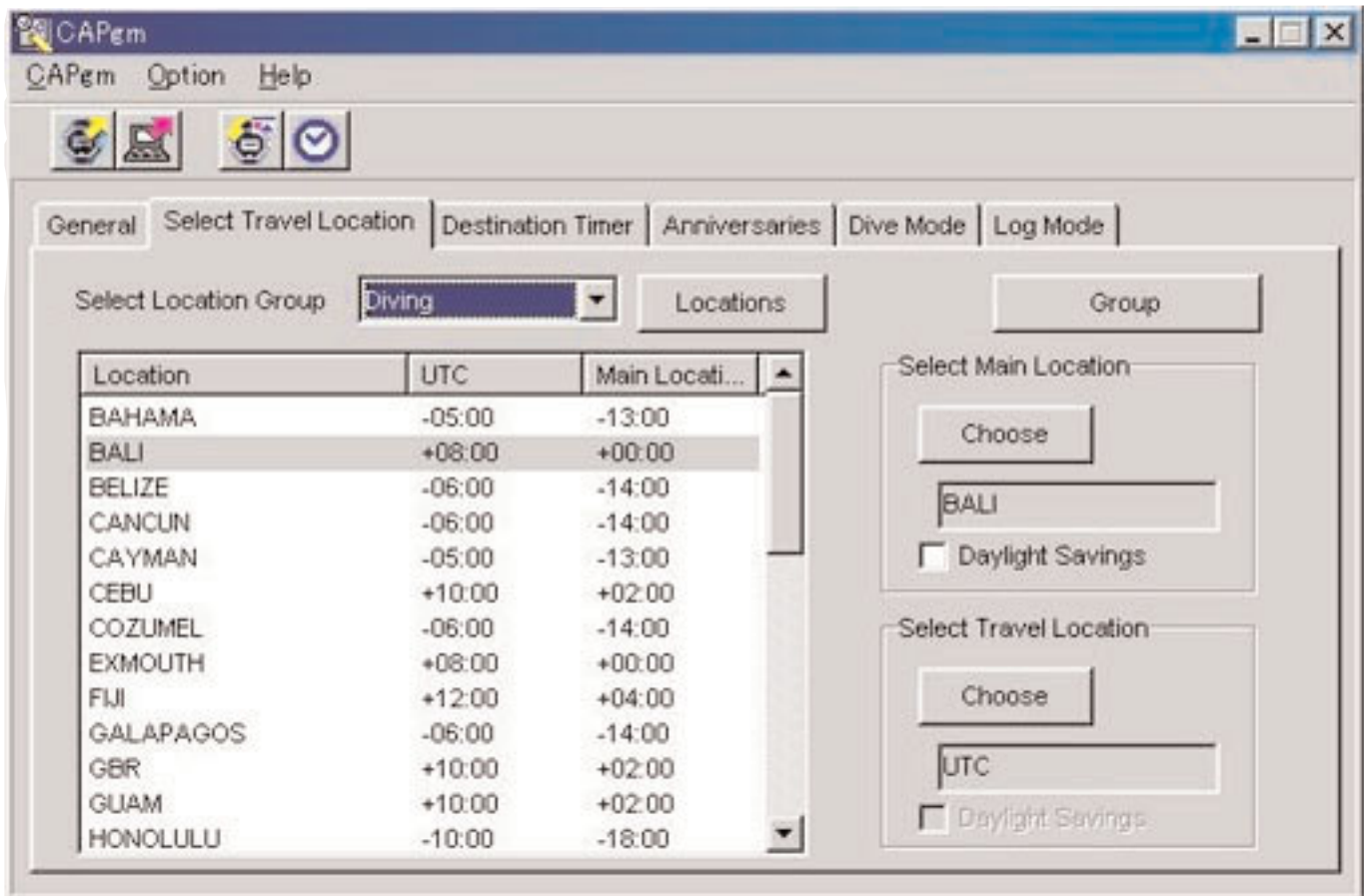
Note: When "Silent" has been selected, the watch alarm does not sound, and only the watch display is shown.

### 3.3. Select Travel Location

The [Select Travel Location] tab is displayed when it is clicked with the mouse on the <Main Window>.

Locations and time differences registered in the watch are displayed immediately after receiving setting data from the watch. The following settings are made with this tab.

- Select Main Location
- Select Travel Location
- Edit Location and Time Difference
- Edit Location Group
- Change Current Location Group

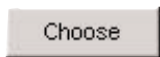


When a location displayed in the location list is clicked with the mouse, data is sorted in ascending order using that location as the key.

### 3.3.1. Select Main Location/Travel Location

Location	UTC	Main Locati...
ANCHORAGE	-09:00	-09:00
AUCKLAND	+12:00	+12:00
BANGKOK	+07:00	+07:00
BEIJING	+08:00	+08:00
BUENOS A	-03:00	-03:00
CAIRO	+02:00	+02:00
CARACAS	-04:00	-04:00
CHICAGO	-06:00	-06:00
DENVER	-07:00	-07:00
DHAKA	+06:00	+06:00
DUBAI	+04:00	+04:00
HONG KONG	+08:00	+08:00
HONOLULU	-10:00	-10:00

Select a location from the location list that you want to set as the main location or travel location, and then click the

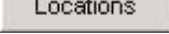


button with the mouse.

Check [Daylight Savings] when you want to apply daylight savings time.


You can also check [Daylight Savings] for those locations that do not actually use daylight savings time. Set daylight savings time after first checking whether or not daylight savings time is used at that location.

### Change Location and Time Difference

You can modify a location and time difference in the location list by clicking the  button with the mouse. (Refer to section "3.4. Edit Location and Time Difference" )

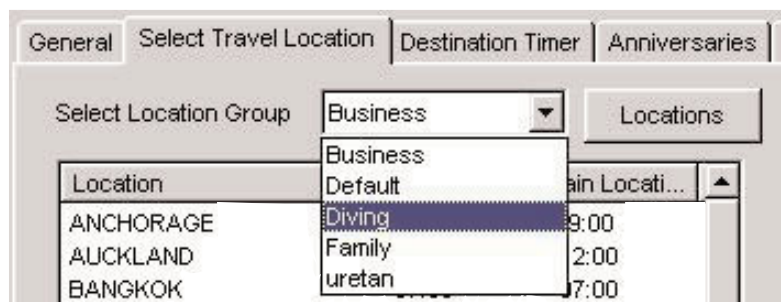
### Edit Location Group

Multiple locations and time differences can be managed by assigning a location group name.

Location group data is stored in your PC. You can edit a location group by clicking the  button with the mouse. (Refer to section "3.4. Edit Location and Time Difference" )

### 3.3.2. Change Current Location Group

You can change the location group currently displayed (current group).




A list of registered location groups is displayed in the [Select Location Group] combination box. When you select a location group you want to display, the current group changes to that group. Data sent to the watch consists of the current locations and time differences at the time data is sent.



### 3.4. Edit Location and Time Difference

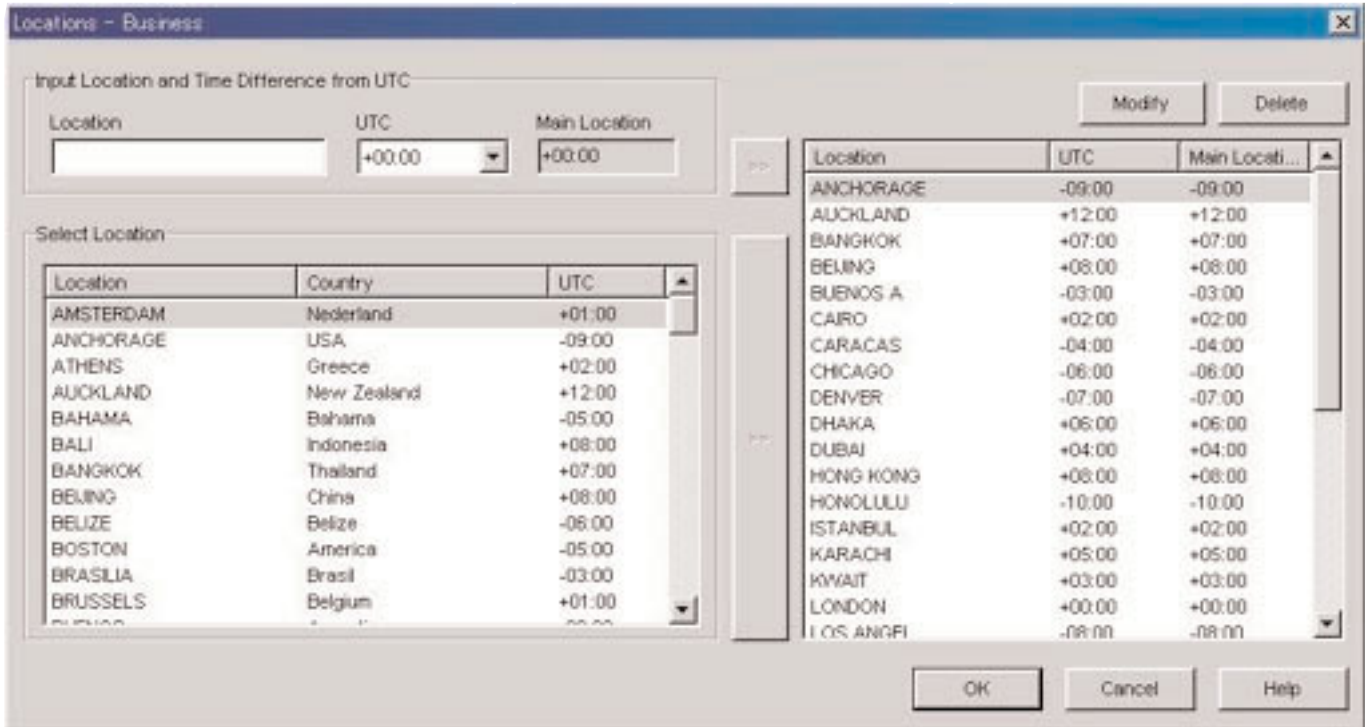
Locations and time differences are edited. Up to 30 locations can be registered in a single location group. When the number

of registered locations reaches 30, the  button is disabled.

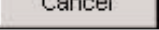

Use only capital letters and numbers when entering locations. A maximum of 9 letters or numbers can be entered.

The following operations can be performed in this dialogue box.

- Adding entered location data to the location list
- Adding existing location data to the location list
- Modifying the location list
- Deleting the location list




When changes are finalized by clicking the  button with the mouse, the modified contents are shown in the dialogue box after which the dialogue box closes.

Modified contents are canceled by either clicking the  button or clicking the  in the upper right corner of the dialogue box with the mouse, after which the dialogue box closes.

#### 3.4.1. Add Location and Time Difference

Enter a location in the [Input Location and Time Difference from UTC] Data area, and then select the time difference from UTC.


The time difference from the main location is calculated automatically.

When the  button to the right of the [Input Location and Time Difference from UTC] area is clicked with the mouse, the manually entered location and time difference are added to the location list.

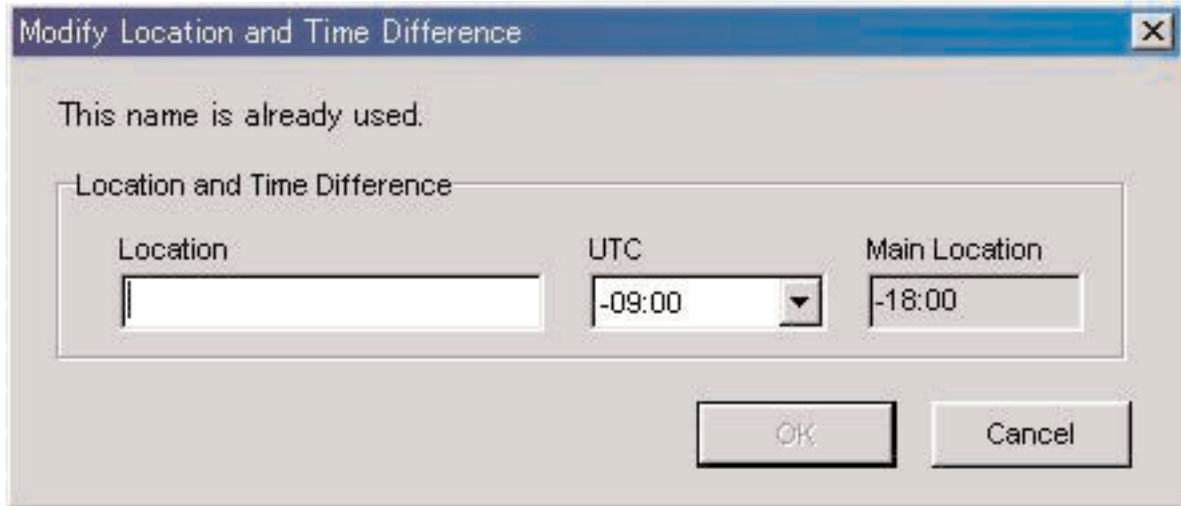
Locations having the same name as a location already registered in the location list cannot be added.



### 3.4.2. Add Existing Location to Location List

When a location is selected in the [Select Location] area and the  button to the right of the [Select Location] area is clicked with the mouse, the selected location and time difference are added to the location list.


The <Modify Location and Time Difference> dialogue box is displayed when a location is added having the same name as a location already registered in the location list.




Locations cannot be added to the location list unless the location name is changed in the <Modify Location and Time Difference> dialogue box.


Time difference from UTC can also be modified in the <Modify Location and Time Difference> dialogue box.

### 3.4.3. Modify or Delete Location List

The <Modify Location and Time Difference> dialogue box is displayed when a location is selected from the location list and the  button is clicked with the mouse.

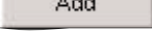

Selected locations and time differences can be modified in the <Modify Location and Time Difference> dialogue box.

The selected location and time difference are deleted when a location is selected from the location list and the  button is clicked with the mouse.

The  and  button is disabled when any of the following locations are selected.

- UTC
- Main location
- Travel location
- Destination

## 3.5. Edit Location Group

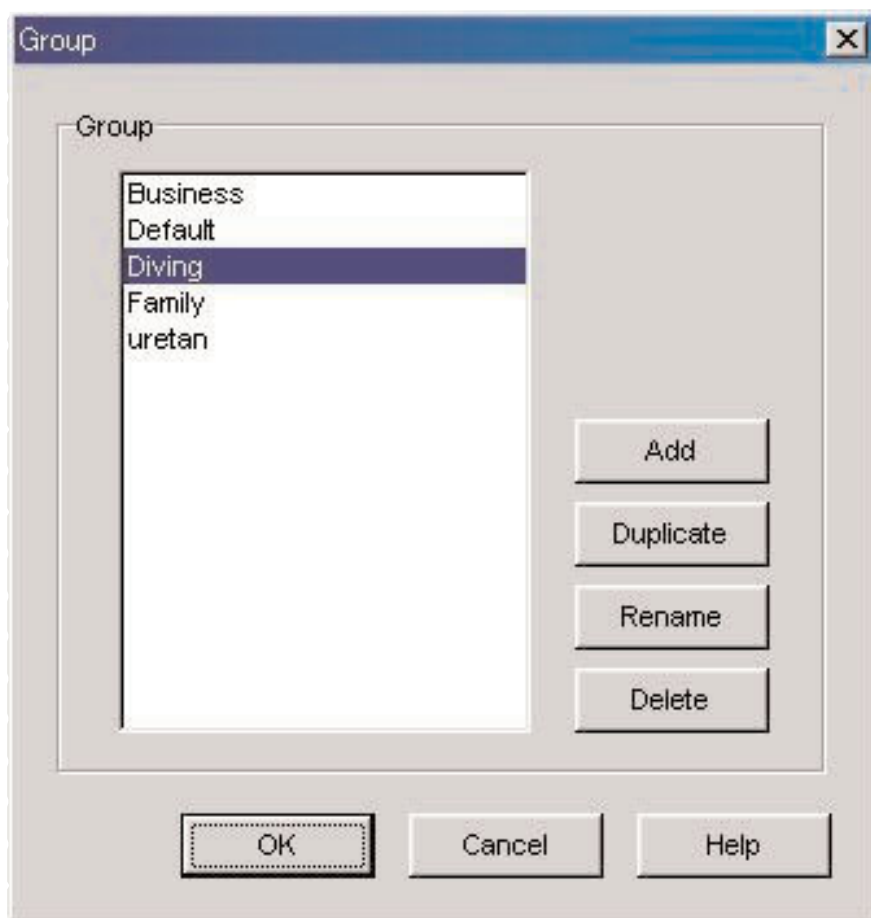
Location group data is edited. Up to 100 groups can be registered. The  and  buttons are disabled when the number of registered groups reaches 100.

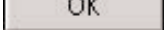
Some functions cannot be used when the temporary location group name, "<<World Time Data>>", is registered. (Refer to section "3.5.5. Temporary Location Group Name")

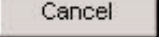

Location group names are entered using up to 20 letters.

The following operations can be performed in this dialogue box.

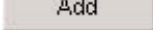
- Adding a location group
- Duplicating location group data
- Changing a location group name
- Deleting location group data



When changes are finalized by clicking the  button with the mouse, the modified contents are shown in the dialogue box after which the dialogue box closes.

Modified contents are canceled by either clicking the  button or clicking the  in the upper right corner of the dialogue box with the mouse, after which the dialogue box closes.

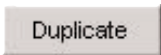
### 3.5.1. Add a Location Group

The <Input Location Group> dialogue box is displayed when the  button is clicked with the mouse to allow you create a new location group.

Only UTC is registered for new location groups.

### 3.5.2. Duplicate Location Group

The <Input Location Group> dialogue box is displayed when a location group is selected from the location group list and the

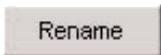


button is clicked with the mouse to allow you to create a new location group.

The duplicated location group is registered for the new location group.

### 3.5.3. Change a Location Group

The <Input Location Group> dialogue box is displayed when a location group is selected from the location group list and the



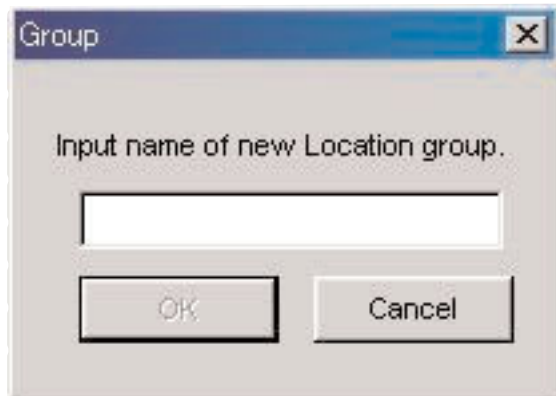
button is clicked with the mouse to allow you to change the name of that location group.

### 3.5.4. Register Location Group

When receiving setting data from the watch, world time data registered in the watch is also received. A name (location group name) must be registered for this data so that it can be managed with your PC.

As mentioned above, world time data registered in your watch is received during reception of setting data from the watch. When this data is received, a comparison is made between the data and the world time data managed with your PC. If identical data is not present, a new group is created and managed.

In the case of creating a new location group, after the <Receive setting data from watch> dialogue box is finished being displayed, the <Group> dialogue box is displayed so that you can register the group. Enter the name of the location group at this time.



### 3.5.5. Temporary Location Group Name

A maximum of 100 groups can be registered.

If world time data is received when there is already 100 groups registered, this data is registered by assigning the temporary group name of "<<World Time Data>>". Old data is updated if a "<<World Time Data>>" group already exists.

Some functions for editing location groups cannot be used at this time. (Refer to section "3.5.7. Function Restrictions")

### 3.5.6. Delete Location Group




The selected location group is deleted when a location group is selected from the location group list and the



button is clicked with the mouse.

### 3.5.7. Function Restrictions

The following functions are restricted corresponding to the number of registered groups when the temporary location group name, "<<World Time Data>>", is registered.

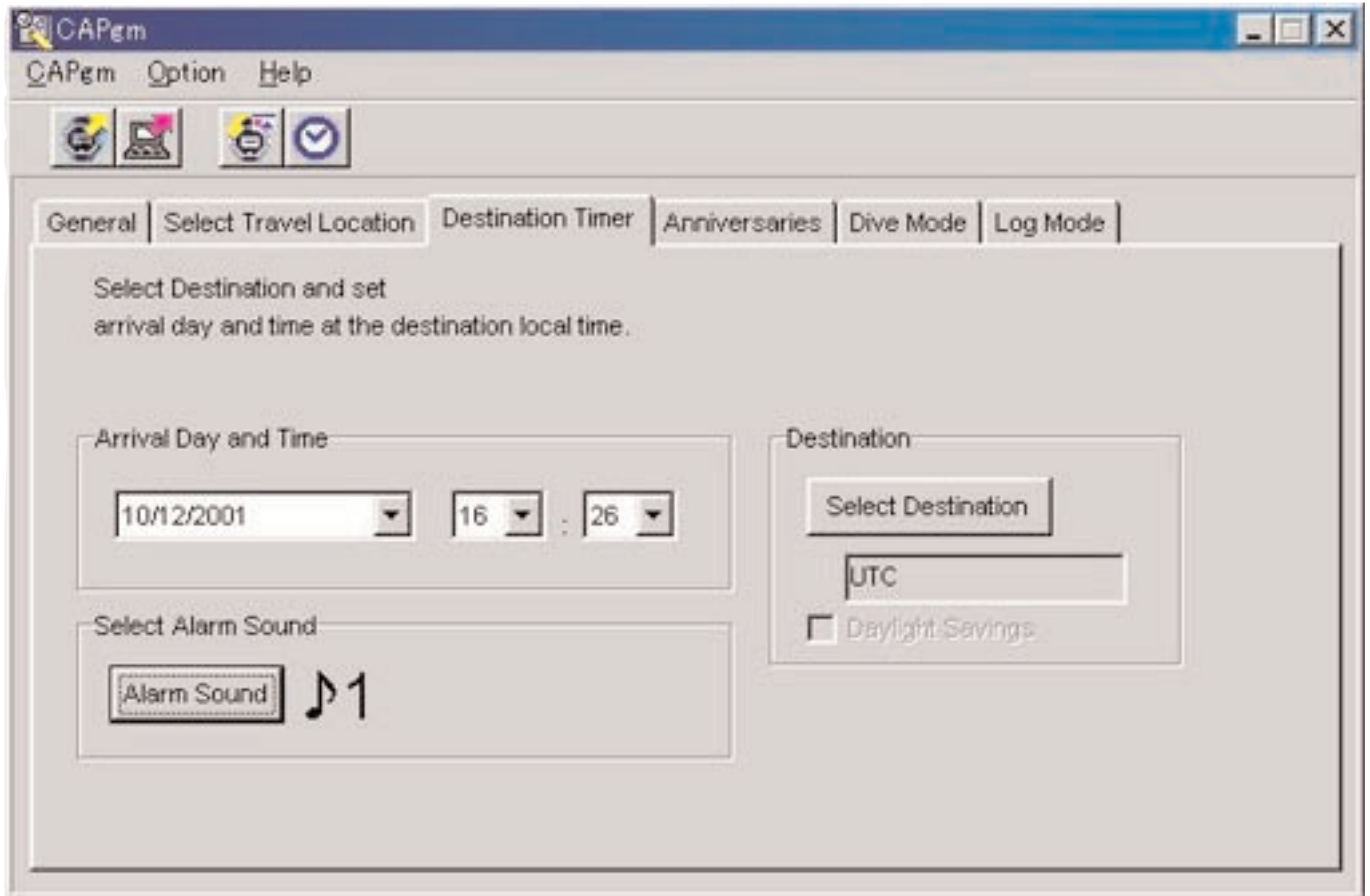
No. of registered groups	Restrictions
Less than 100	No restrictions
100	 button and  button are disabled.
101	Only  button is enabled.

## 3.6. Destination Timer

The [Destination Timer] tab is displayed when it is clicked with the mouse on the <Main Window>.

The following settings are made with this tab.

- Setting Arrival Day and Time
- Selecting Destination
- Selecting Alarm Sound



### 3.6.1. Arrival Day and Time

Set the arrival day and time in local time.

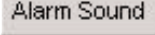
### 3.6.2. Select Destination

Since the <Select Destination> dialogue box is displayed when this button is clicked with the mouse, you can select a destination at this time.

Check [Daylight Savings] when you want to apply daylight savings time.

You can also check [Daylight Savings] for those locations that do not actually use daylight savings time. Set daylight savings time after first checking whether or not daylight savings time is used at that location.

### 3.6.3. Select Alarm Sound

You can select the alarm sound by clicking on the  button with the mouse. (Refer to section "3.2.4. Alarm Sound")

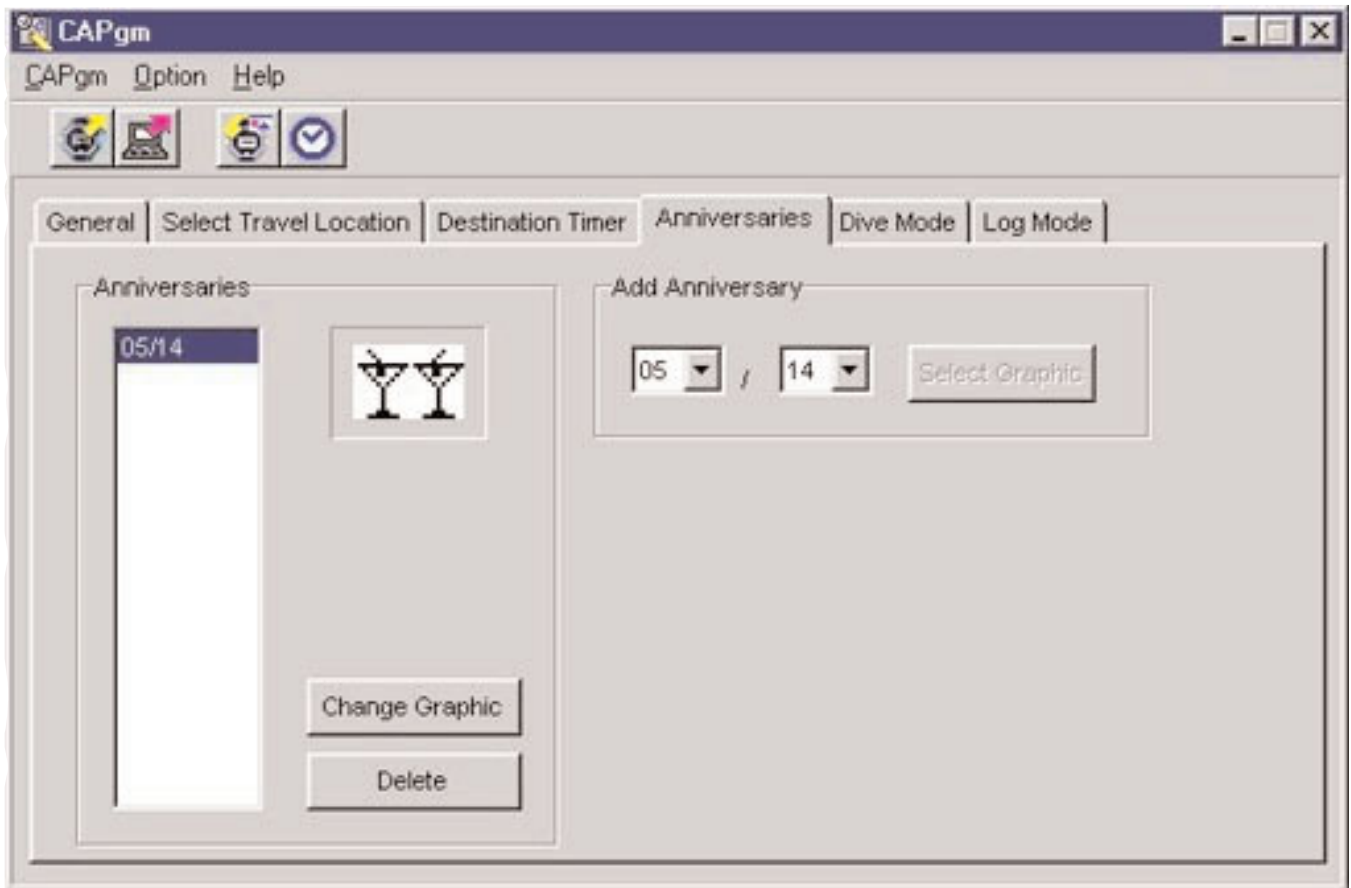
## 3.7. Anniversaries

The [Anniversaries] tab is displayed when it is clicked with the mouse on the <Main Window>.

Black and white bit map files 24 pixels wide and 16 pixels high can be registered as graphic files for anniversaries. Sample graphics are contained in the [BMP] folder of the CD-ROM provided.

The following settings are made with this tab.

- Adding an anniversary
- Changing an anniversary graphic
- Deleting an anniversary



### 3.7.1. Add Anniversary

First select a date. Specify the month in the left combination box and the day in the right combination box.

If an anniversary has been set on the date selected, the **Select Graphic** button is enabled.

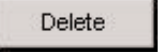
Since the <Open Graphic File> dialogue box is displayed when the **Select Graphic** button is clicked with the mouse, you can register the graphic at this time.

### 3.7.2. Change Graphic

The **Change Graphic** button is enabled when the date on which you want to change the graphic is selected from the anniversary list.

Since the <Open Graphic File> dialogue box is displayed when the **Change Graphic** button is clicked with the mouse, you can change the graphic at this time.

### 3.7.3. Delete Anniversary

The  button is enabled when the date on which you want to delete a graphic is selected from the anniversary list.

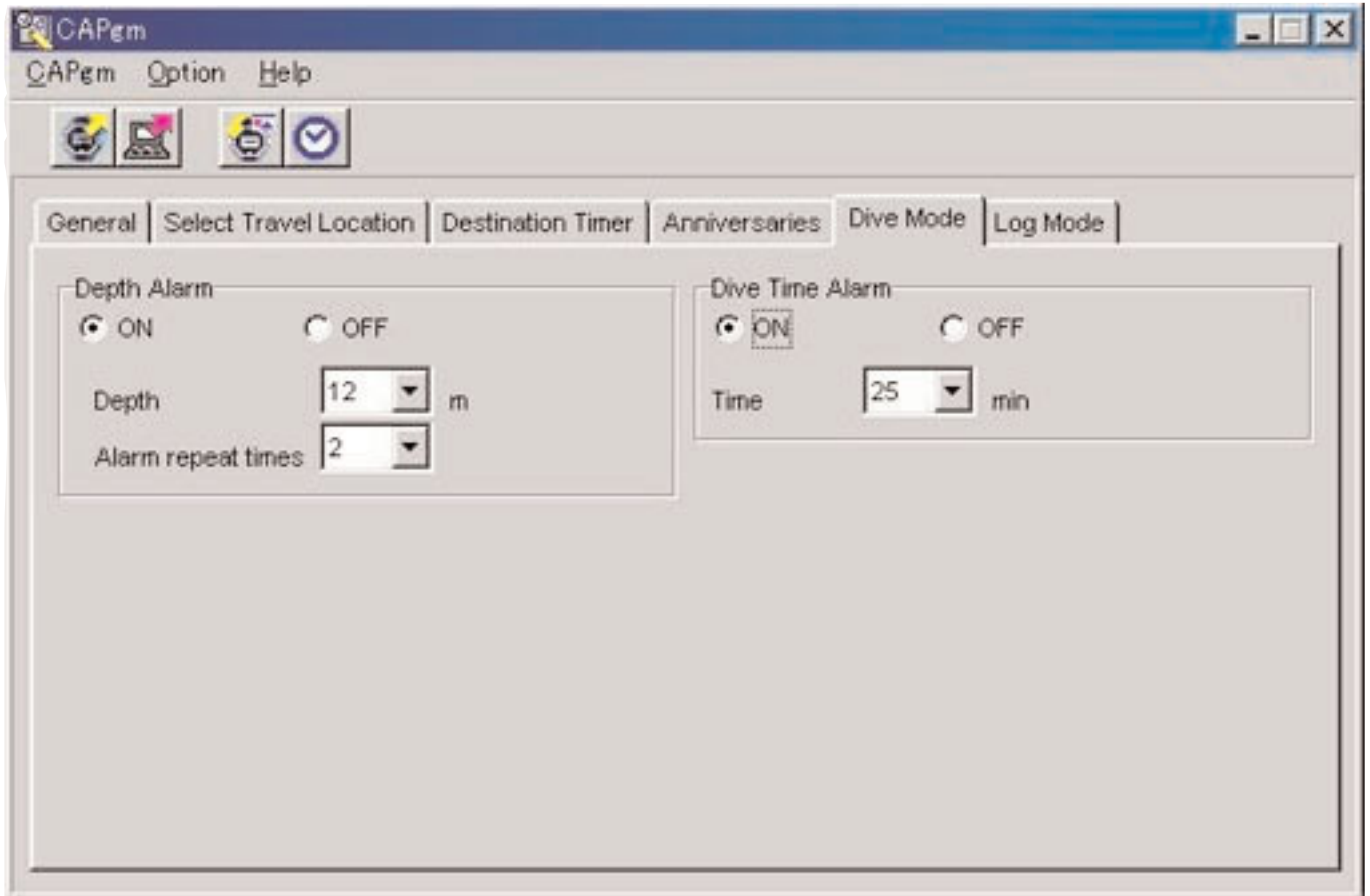
The selected anniversary is deleted when the  button is clicked with the mouse.

## 3.8. Dive Mode

The [Dive Mode] tab on the <Main Window> is displayed when it is clicked with the mouse.

The following settings are made with this tab.

- Depth alarm
- Dive time alarm



### 3.8.1. Depth Alarm

#### ON/OFF

Select ON when you want the alarm to sound.

Select OFF when you do not want the alarm to sound.

#### Depth

Specify the depth at which the alarm is to sound.

The alarm is turned off when 0 m is specified for the depth.

The depth is automatically set to 10 m if ON is checked at a depth of 0 m.

#### Alarm Repeat Times

Select the number of times you want the alarm to sound.

This setting cannot be changed if the alarm is set to OFF.



### **3.8.2. Dive Time Alarm**

#### **ON/OFF**

Select ON when you want the alarm to sound.

Select OFF when you do not want the alarm to sound.

#### **Time**

Select the elapsed time at which you want the alarm to sound.

The alarm is turned off when 0 minutes is selected for the time.

The time is automatically set to 5 minutes if ON is checked at 0 minutes.

### 3.9. Set Daily Graphic

- Graphics that are displayed on different days can be registered in the watch.

The <Set Daily Graphic> dialogue box is displayed when [Set Daily Graphic (D)] is selected from the [Option (O)] menu

on the <Main Window> or the  button is clicked with the mouse in the tool bar.

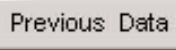
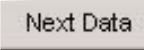
Black and white bit map files 24 pixels wide and 16 pixels high can be registered as graphic files for daily graphics. Sample graphics are contained in the [BMP] folder of the CD-ROM provided.

The following settings are made in this dialogue box.


- Adding a graphic
- Changing a graphic
- Deleting a graphic
- Changing the display order



When the number of set graphics cannot be contained on a single screen, you can scroll the display by clicking on the

 or  button with the mouse.


### 3.9.1. Add Graphic


A dialogue box for selecting a graphic is displayed when the  button is clicked with the mouse, allowing you to add a graphic. The graphic that is added is added as the last data.

When the addition procedure is performed after clicking on a graphic to select that graphic, the graphic is added at the selected location.




### 3.9.2. Change Graphic

The  button is enabled when a graphic is selected.



A dialogue box for selecting a graphic is displayed when the  button is clicked with the mouse, allowing you to change that graphic.



### 3.9.3. Delete Graphic

The  button is enabled when a graphic is selected.

The selected graphic is deleted when the  button is clicked with the mouse.

### 3.9.4. Change Display Order

The   buttons are enabled when graphics are selected.

The display order of the selected graphics can be interchanged when the   buttons are clicked with the mouse.

---

## 4. Limiting Values

The following lists the limiting values for data entered with [CAPgm].

---

### 4.1. No. of Registrations

Item	Max. registered no.	Comments
Travel location groups	100	
Travel locations	31	UTC is fixed
Anniversaries	366	
Daily graphics	366	

---

### 4.2. No. of Entered Characters

Item	Max. no. of characters
Travel location groups	20 letters or numbers
Travel locations	9 capital letters

---

### 4.3. Other Limitations

Item	Description
Timer time	1-99 minutes (1 minute increments)
Graphic files	Black and white bit map files 24 pixels wide and 16 pixels high
Dive time alarm time	0-90 minutes (5 minute increments)
Depth alarm depth	10-39 meters (1 meter increments)
No. of logs	0-65535