

How to install the driver software

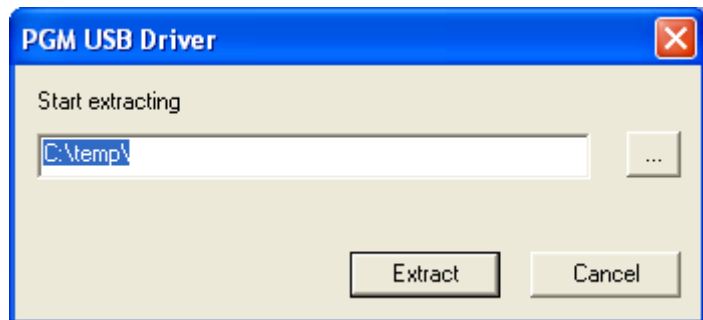
In order to perform the data transfer between your personal computer and the communication unit, install the USB driver software into your personal computer in advance.

Install the USB driver software by following the procedure described below.

(1) Download the driver software module to the working folder.

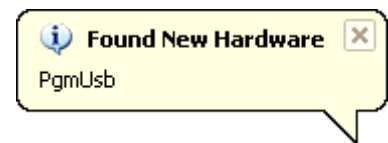
* You must login to Windows as an Administrator authority.

(2) After confirming that your computer has started up properly, exit all Windows application program. Double click the driver software "PgmUSB Driver_ENG.exe" to start extracting the file. Click "Yes" when the dialog box right appears.



(3) Plug in the communication unit to an available USB port on your personal computer.

When the USB cable is properly plugged in, Windows will show that a new hardware has been found. Then, click "Locate and install driver software (recommended)".

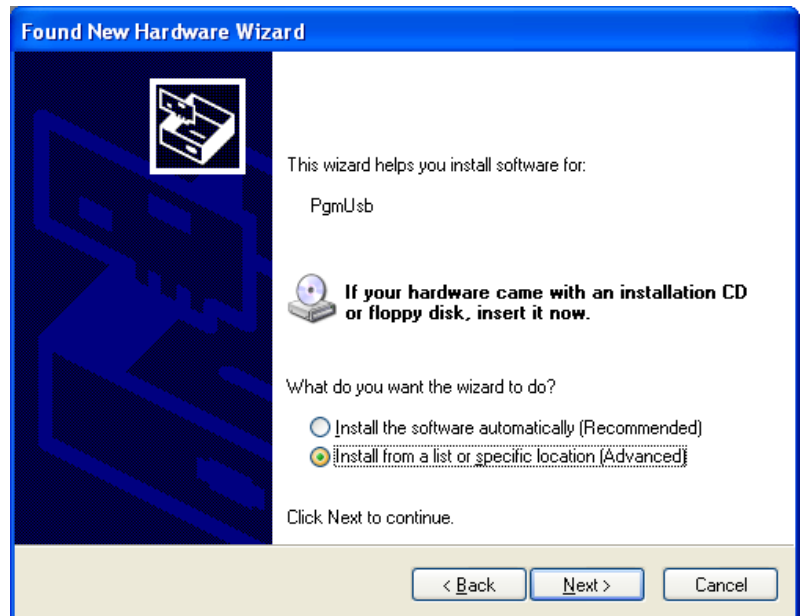


(4) Found New Hardware Wizard starts when the windows finish searching for the new hardware.

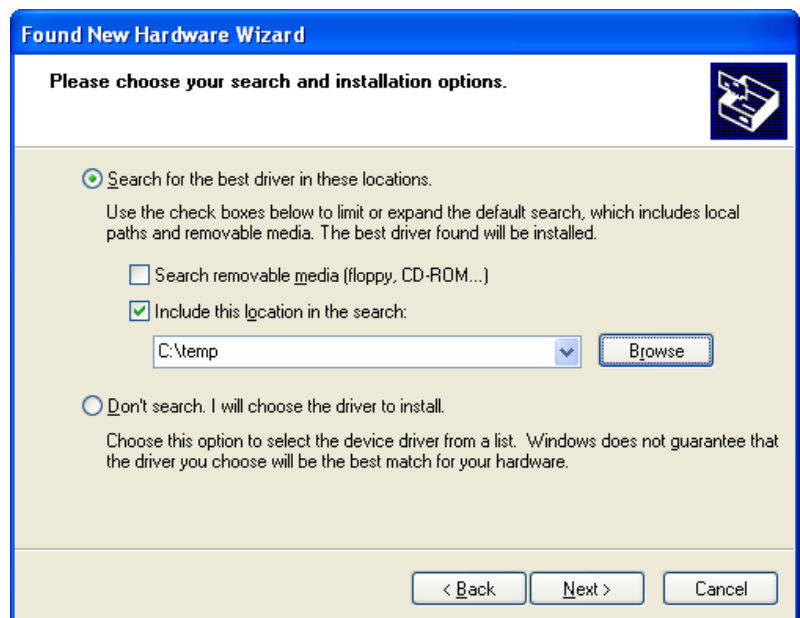
Windows will ask you if it can connect to Windows Update to search for software. Select "No, not this time" then click "Next".



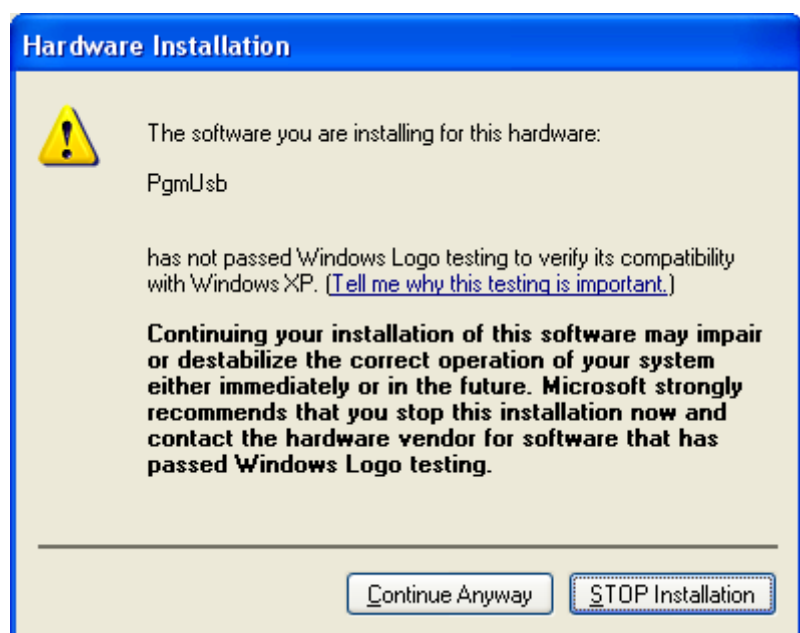
(5) When the window right appears, select “Install from a list or specific location {Advanced}” then click “Next”.



(5) When the window right appears, select “Search for the best driver in these locations” and check “Include this location in the search. Click Browse and specify the directory you extracted the driver file then click “Next”. Driver installation will start after searching for the driver file.



When the message window right appears, click “Continue Anyway” to continue installation.



(6) The driver installation starts.

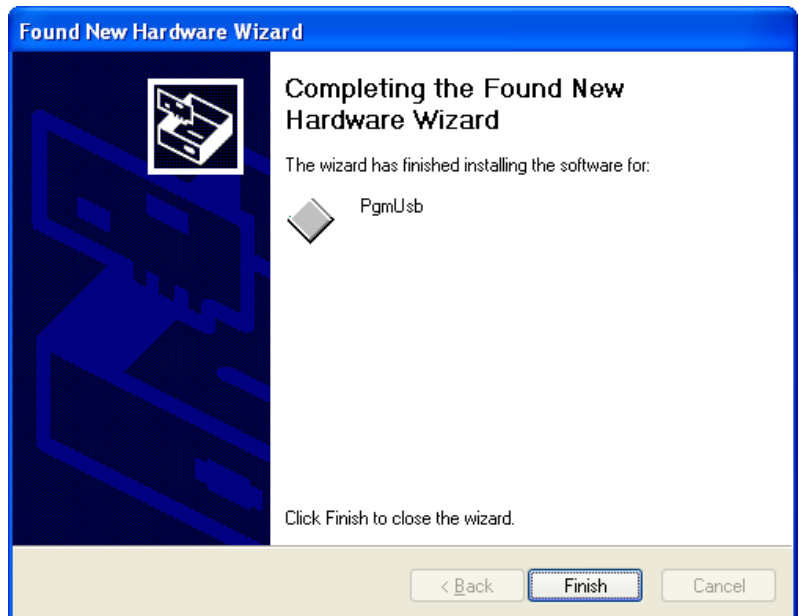
<Notice>

It may take long to complete installation.



(7) Click "Finish" to complete the installation.

Now you can transfer the data using USB Cable for HYPER AQUALAND.



* All the images below are for Windows XP SP3.

* Installation of the USB driver software is required only once before performing the data transfer by using the communication unit for the first time. It is no longer required to install the driver software prior to a subsequent data transfer. However, the installation of the driver software is required if you perform the data transfer between the CYBER AQUALAND Nx and any PC that the driver software has not been installed.